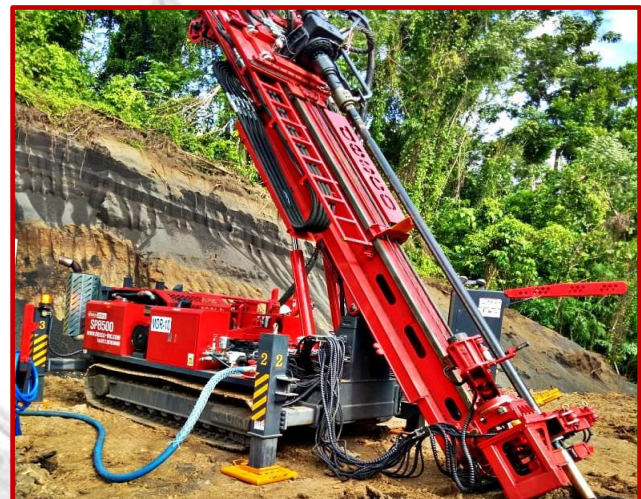


SP8500SA-RC



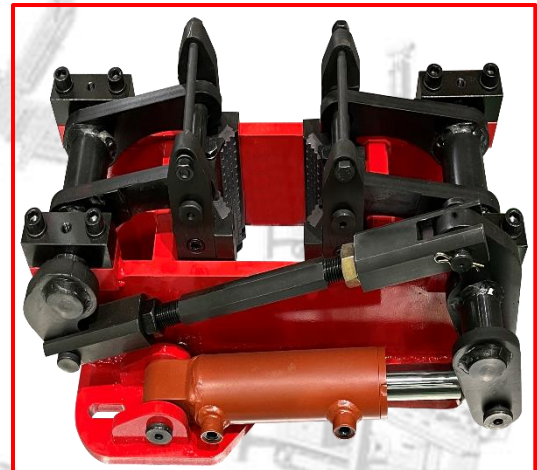
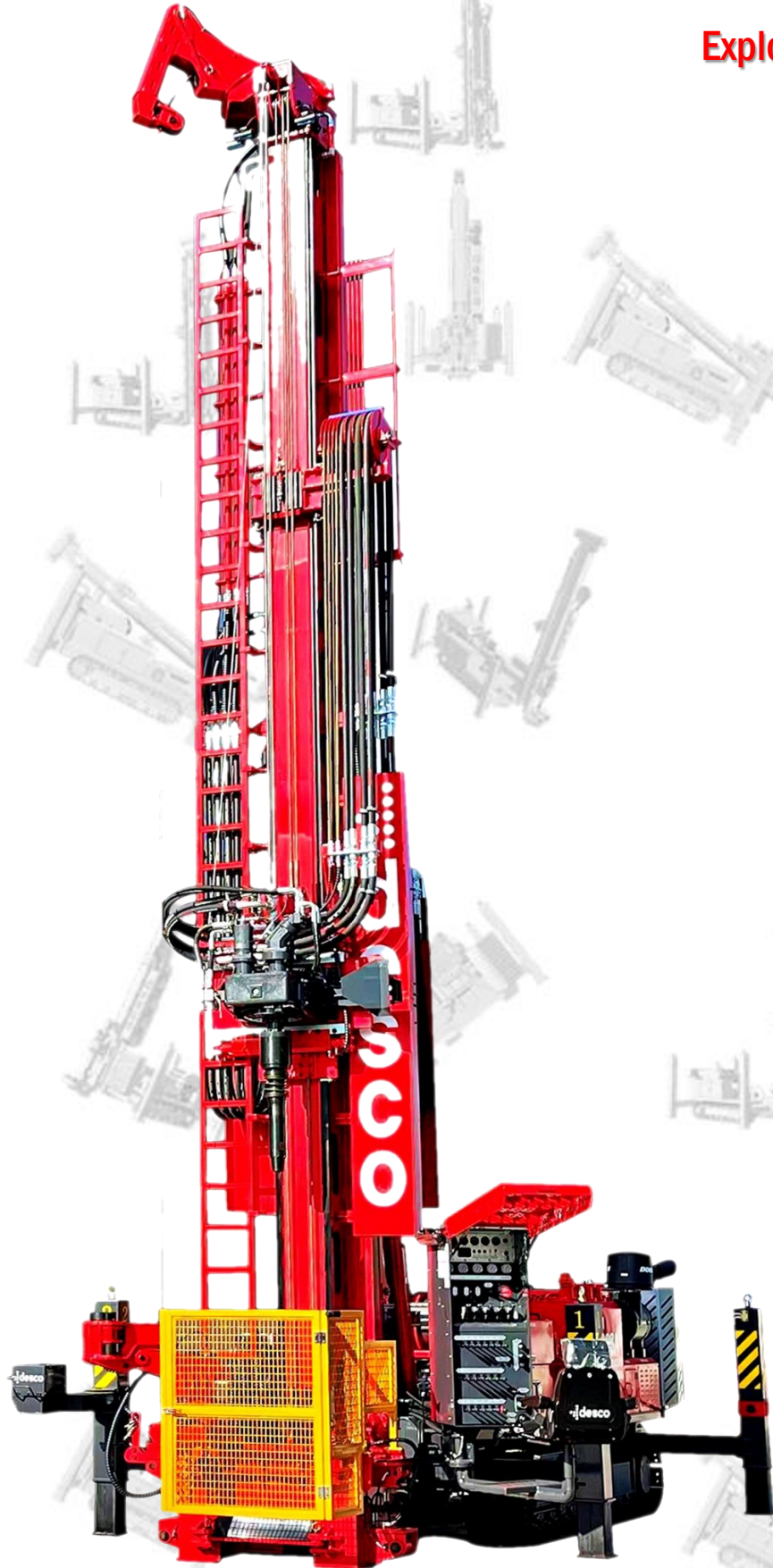
EXPLORATION / CORE DRILLING

SP8500SA-RC



SP8500SA-RC

Explore better solutions
brought to you by DESCO



EXPLORATION / RC MULTI-PURPOSE DRILLING

TECHNICAL SPECIFICATIONS

		SP4500SA-RC	SP5500SA-RC	SP6500SA-RC	SP7000SA-RC	SP7500SA-RC	SP8500SA-RC
DIMENSIONS							
Length	M	7.8	8.6	11.6	11.6	11.6	12.5
Width	M	1.9	2.2	2.2	2.3	2.3	2.3
Height	M	2.5	2.6	2.7	2.9	2.9	3.2
Weight	Ton	10.5	14.0	16.5	17.0	18.0	23.0
ENGINE							
		Hyundai / Doosan Engine					
Power rating at 1800rpm	hp	100	170	170	270	270	400
Fuel capacity	L	120	200	300	300	300	400
TOP DRIVE							
		Two hydraulic motors or Four hydraulic motors					
Rotation RPM (1 st / 2 nd)	rpm	0~120 / 0~1200					
Rotation Torque (1 st & 2 nd)	kg.M	84 / 250	94 / 300	105 / 400	140 / 500	190 / 500	225 / 750
FEED SYSTEM							
		Variable Speed Hydraulic Cylinder					
Travel Length	M	4	4.5	7	7.5	7.5	7.5
Pull-back Force	Ton	11	13	16	25	30	44
Pull-down Force	Ton	5	6	7	12	12	20
Feed Rate (Variable)	M/min	30 ~ 45					
HYDRAULIC SYSTEM							
		3 or 4 pumps open loop system					
Model		K3V63DP, K3V112DP, K3V140DP, K3V180DP, K3V200DP, K3V250DP, HSF30D					
Flow Rate 1 st & 2 nd	LPM	95 / 95	168 / 168	210 / 210			300 / 300
Flow Rate 3 rd & 4 th	LPM	60	45 / 45	120	95 / 95	168 / 168	
Operating Pressure	Bar	280					
Hyd. Oil Tank	L	150	300	300	300	300	400
WORKING TABLE & CLAMP							
Diameter	Inch	8	10	10	10	10	10
Drill Pipe Breakout		6ton					
DRILL ROD & CASING							
	M	3.0	3.0	6.0	6.0	6.0	6.0
TRAMMING							
		Solar55			Solar75		Solar130
Tramming Speed	km/h	2.5 ~ 4.0					
Gradeability		25°					
Track Shoes Width	mm	400	400	400	450	450	500
WINCH							
	Ton	3.5	5.0	5.0	10.0	10.0	15.0
WIRELINE							
	M	500	1000	1000	1800	1800	2500
ELECTRICAL SYSTEM							
		24V					
Lights		Working table, Mast & Control panel					
CONTROL PANEL							
		All control gauges are grouped at the operator's station within sight of the borehole					
Panel Rotation		15°					
HYD. JACKS & RIGGERS							
		Four jacks & riggers / Self-loading system					
MUD PUMP							
		Triplex piston pump / Hyd. cylinder operated duplex & double acting					
Model		FMC, AW1122BCD, DSMP300, DSMP600					
Capacity	LPM	200	300	300	300	300	300
OPTIONAL LIST							
Rod Handler (Max.)		Dia. 73mm ~ 120mm					
RiHS (Rod rack & handler)		Rod Rack Integrated Handling System					
Mud Pump		FMC, AW1122BCD, DSMP300, DSMP600					
Cyclone Device							
Line Oiler		Driven by Hyd. cylinder / 100cc per swift					
Genset		23kW / 100V~220V					
Inverter		7.0kW / 100V~220V					
Remote Control for Tramming		Hetronics					
Preheating System		For engine & hydraulic system					
Safety Cage							

Desco Inc. (HQ/Manufacturer)

HEAD OFFICE

91-5, Nanosandan 2-ro, Nam-myeon, Jangseong-gun, Jeollanam-do, Korea

TEL: 82.62.952.4564 / FAX: 82.62.953.1593 / EMAIL: desco@desco-inc.com

OVERSEAS SALES & MARKETING Div.

2607 Jidong, LotteCastle, 76, Soangin-dong, Jangno-gu, Seoul, Korea.

TEL: 82.2.3670.6400 / FAX: 82.2.3670.6 / www.desco-inc.com