

DTH HAMMER 3.5"

DESCO INC. is at your solution and service.

Desco Inc.(HQ/Manufacturer)

HEAD OFFICE: 1240-1, Ok-Dong, Gwangsan, Gwangju, Korea

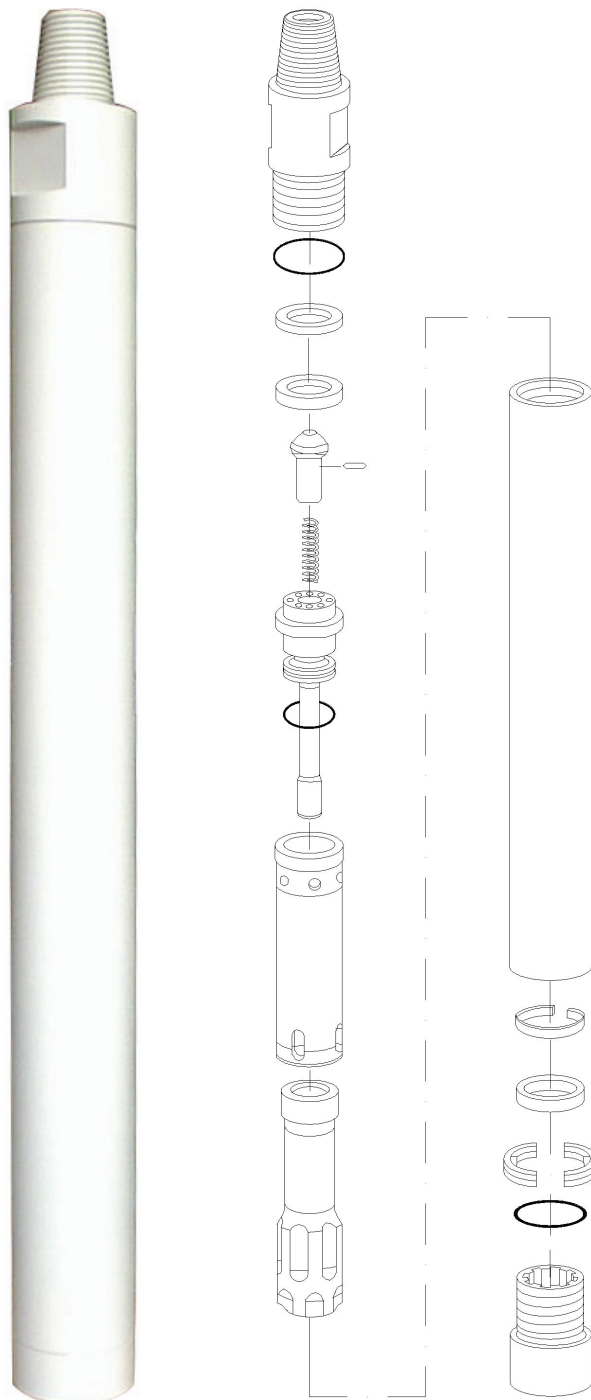
TEL : 82.62.952.4564 / FAX : 82.62.953.1593

EXPORT DIVISION

2607 jidong, Lottecastle, 76, Soongin-Dong, Jongno-Gu, Seoul, Korea

TEL : 82-2-3670 6400 / FAX : 82-2-3670 6399

E-mail : desco@desco-inc.com



MODEL ACE35 SHANK TYPE DHD3.5

| No | Part Name | Part No |
|----|------------------------|-----------|
| 1 | Back head | 3.5A-01 |
| 2 | B.H. O-ring | 3.5A-01-1 |
| 3 | Space ring | 3.5A-03-1 |
| 4 | Make-up ring(urethane) | 3.5A-04-1 |
| 5 | Check valve | 3.5A-06 |
| 6 | Chock | 3.5A-06-1 |
| 7 | C.V spring | 3.5A-06-2 |
| 8 | Air distributor | 3.5A-08 |
| 9 | A.D. O-ring | 3.5A-08-1 |
| 10 | Inner cylinder | 3.5A-10 |
| 11 | Piston | 3.5A-11 |
| 12 | Case | 3.5A-12 |
| 13 | Piston retainer ring | 3.5A-11-1 |
| 14 | Bearing | 3.5A-14 |
| 15 | Bit. retainer ring | 3.5A-19-1 |
| 16 | Bit. ret. O-ring | 3.5A-19-1 |
| 17 | Chuck | 3.5A-20 |

SPECIFICATION

| | |
|------------------|--------------------|
| DTH Hammer | 3.5" Hammer |
| Backhead Thread | API 2*3/8 REG. Pin |
| Length | 795mm |
| Outside Diameter | Dia. 85mm |
| Weight | 24kg |
| Shank Type | DHD3.5 |

AIR CONSUMPTION CHART

| | |
|-------------------|--------|
| 150 PSI (10.5bar) | 175CFM |
| 250 PSI (17.5bar) | 300CFM |
| 350 PSI (24.5bar) | 430CFM |

Notice

The specification & drawing is based on IR shank.
So, Inner parts & specification can be different as the type of the other shanks.

DTH HAMMER 4"

DESCO INC. is at your solution and service.

Desco Inc.(HQ/Manufacturer)

HEAD OFFICE: 1240-1, Ok-Dong, Gwangsan, Gwangju, Korea

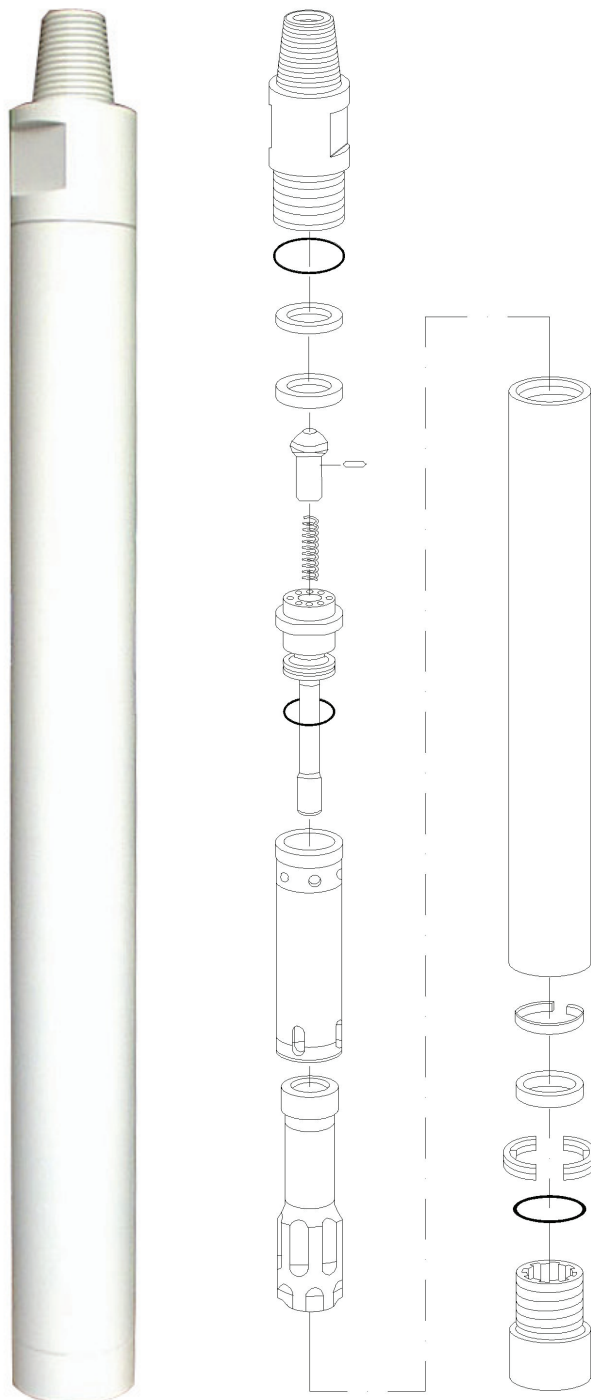
TEL : 82.62.952.4564 / FAX : 82.62.953.1593

EXPORT DIVISION

2607 jidong, Lottecastle, 76, Soongin-Dong, Jongno-Gu, Seoul, Korea

TEL : 82-2-3670 6400 / FAX : 82-2-3670 6399

E-mail : desco@desco-inc.com



MODEL ACE40 SHANK TYPE DHD340

| No | Part Name | Part No |
|----|------------------------|-----------|
| 1 | Back head | 4.OA-01 |
| 2 | B.H. O-ring | 4.OA-01-1 |
| 3 | Space ring | 4.OA-03-1 |
| 4 | Make-up ring(urethane) | 4.OA-04-1 |
| 5 | Check valve | 4.OA-06 |
| 6 | Chock | 4.OA-06-1 |
| 7 | C.V spring | 4.OA-06-2 |
| 8 | Air distributor | 4.OA-08 |
| 9 | A.D. O-ring | 4.OA-08-1 |
| 10 | Inner cylinder | 4.OA-10 |
| 11 | Piston | 4.OA-11 |
| 12 | Case | 4.OA-12 |
| 13 | Piston retainer ring | 4.OA-11-1 |
| 14 | Bearing | 4.OA-14 |
| 15 | Bit. retainer ring | 4.OA-19 |
| 16 | Bit. ret. O-ring | 4.OA-19-1 |
| 17 | Chuck | 4.OA-20 |

SPECIFICATION

| | |
|------------------|--------------------|
| DTH Hammer | 4" Hammer |
| Backhead Thread | API 2*3/8 REG. Pin |
| Length | 925mm |
| Outside Diameter | Dia. 98mm |
| Weight | 38kg |
| Shank Type | DHD340, SD4, QL40 |

AIR CONSUMPTION CHART

| | |
|-------------------|--------|
| 150 PSI (10.5bar) | 200CFM |
| 250 PSI (17.5bar) | 365CFM |
| 350 PSI (24.5bar) | 535CFM |

Notice

The specification & drawing is based on IR shank.
So, Inner parts & specification can be different as the type of the other shanks.

DTH HAMMER 4"

DESCO INC. is at your solution and service.

Desco Inc.(HQ/Manufacturer)

HEAD OFFICE: 1240-1, Ok-Dong, Gwangsan, Gwangju, Korea

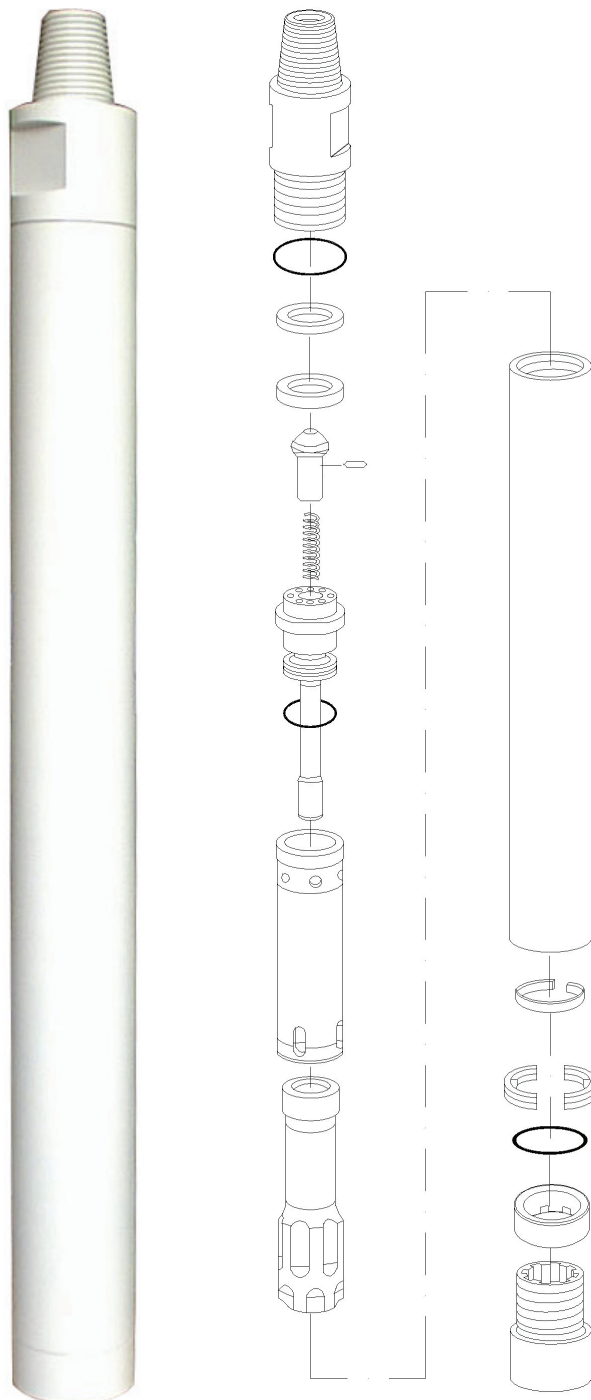
TEL : 82.62.952.4564 / FAX : 82.62.953.1593

EXPORT DIVISION

2607 jidong, Lottecastle, 76, Soongin-Dong, Jongno-Gu, Seoul, Korea

TEL : 82-2-3670 6400 / FAX : 82-2-3670 6399

E-mail : desco@desco-inc.com



MODEL ACE40 SHANK TYPE SD4

| No | Part Name | Part No |
|----|------------------------|------------|
| 1 | Back head | 4.0A-01 |
| 2 | B.H. O-ring | 4.0A-01-1 |
| 3 | Space ring | 4.0A-03-1 |
| 4 | Make-up ring(urethane) | 4.0A-04-1 |
| 5 | Check valve | 4.0A-06 |
| 6 | Chock | 4.0A-06-1 |
| 7 | C.V spring | 4.0A-06-2 |
| 8 | Air distributor | 4.0A-08 |
| 9 | A.D. O-ring | 4.0A-08-1 |
| 10 | Inner cylinder | 4.0A-10 |
| 11 | Piston | 4.0A-11 |
| 12 | Case | 4.0A-12(S) |
| 13 | Piston retainer ring | 4.0A-11-1 |
| 14 | Bearing | 4.0A-14(S) |
| 15 | Bit. retainer ring | 4.0A-19(S) |
| 16 | Bit. ret. O-ring | 4.0A-19-1 |
| 17 | Chuck | 4.0A-20(S) |

SPECIFICATION

| | |
|------------------|--------------------|
| DTH Hammer | 4" Hammer |
| Backhead Thread | API 2*3/8 REG. Pin |
| Length | 925mm |
| Outside Diameter | Dia. 98mm |
| Weight | 38kg |
| Shank Type | DHD340, SD4, QL40 |

AIR CONSUMPTION CHART

| | |
|-------------------|--------|
| 150 PSI (10.5bar) | 200CFM |
| 250 PSI (17.5bar) | 365CFM |
| 350 PSI (24.5bar) | 535CFM |

Notice

The specification & drawing is based on IR shank.
So, Inner parts & specification can be different as the type of the other shanks.

DTH HAMMER 4"

DESCO INC. is at your solution and service.

Desco Inc.(HQ/Manufacturer)

HEAD OFFICE: 1240-1, Ok-Dong, Gwangsan, Gwangju, Korea

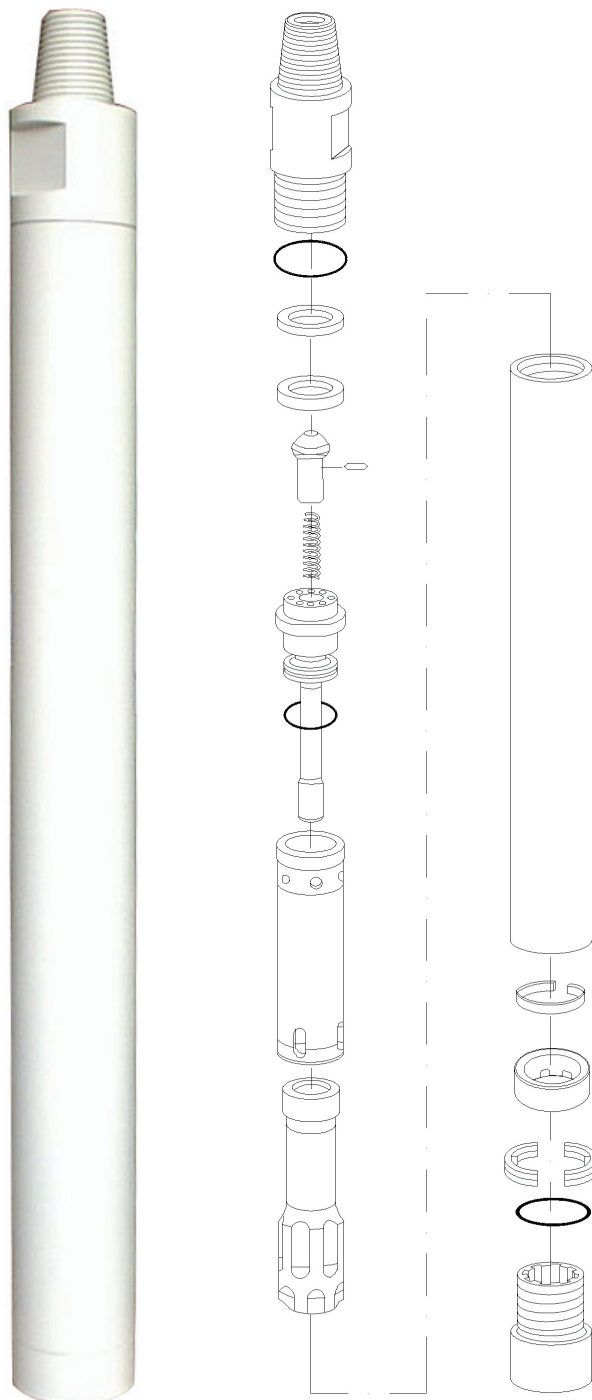
TEL : 82.62.952.4564 / FAX : 82.62.953.1593

EXPORT DIVISION

2607 jidong, Lottecastle, 76, Soongin-Dong, Jongno-Gu, Seoul, Korea

TEL : 82-2-3670 6400 / FAX : 82-2-3670 6399

E-mail : desco@desco-inc.com



MODEL ACE40 SHANK TYPE QL40

| No | Part Name | Part No |
|----|------------------------|------------|
| 1 | Back head | 4.0A-01 |
| 2 | B.H. O-ring | 4.0A-01-1 |
| 3 | Space ring | 4.0A-03-1 |
| 4 | Make-up ring(urethane) | 4.0A-04-1 |
| 5 | Check valve | 4.0A-06 |
| 6 | Chock | 4.0A-06-1 |
| 7 | C.V spring | 4.0A-06-2 |
| 8 | Air distributor | 4.0A-08 |
| 9 | A.D. O-ring | 4.0A-08-1 |
| 10 | Inner cylinder | 4.0A-10 |
| 11 | Piston | 4.0A-11 |
| 12 | Case | 4.0A-12(Q) |
| 13 | Piston retainer ring | 4.0A-11-1 |
| 14 | Bearing | 4.0A-14(Q) |
| 15 | Bit. retainer ring | 4.0A-19(Q) |
| 16 | Bit. ret. O-ring | 4.0A-19-1 |
| 17 | Chuck | 4.0A-20(Q) |

SPECIFICATION

| | |
|------------------|--------------------|
| DTH Hammer | 4" Hammer |
| Backhead Thread | API 2*3/8 REG. Pin |
| Length | 925mm |
| Outside Diameter | Dia. 98mm |
| Weight | 38kg |
| Shank Type | DHD340, SD4, QL40 |

AIR CONSUMPTION CHART

| | |
|-------------------|--------|
| 150 PSI (10.5bar) | 200CFM |
| 250 PSI (17.5bar) | 365CFM |
| 350 PSI (24.5bar) | 535CFM |

Notice

The specification & drawing is based on IR shank.
So, Inner parts & specification can be different as the type of the other shanks.

DTH HAMMER 5"

DESCO INC. is at your solution and service.

Desco Inc.(HQ/Manufacturer)

HEAD OFFICE: 1240-1, Ok-Dong, Gwangsan, Gwangju, Korea

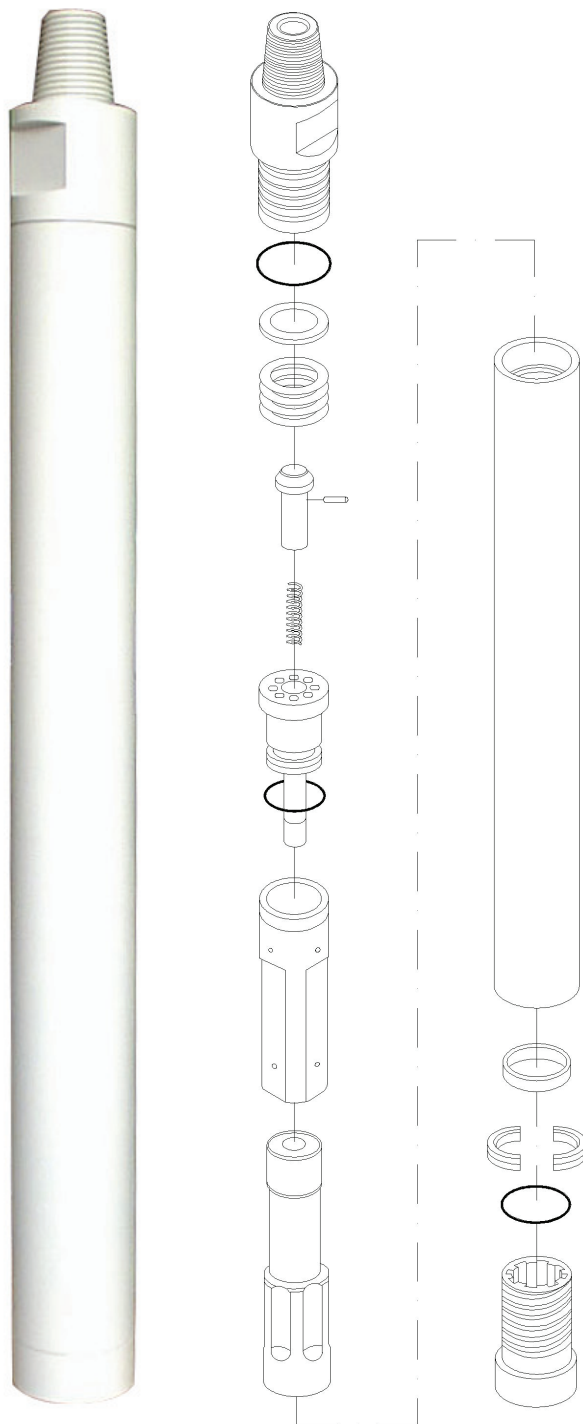
TEL : 82.62.952.4564 / FAX : 82.62.953.1593

EXPORT DIVISION

2607 jidong, Lottecastle, 76, Soongin-Dong, Jongno-Gu, Seoul, Korea

TEL : 82-2-3670 6400 / FAX : 82-2-3670 6399

E-mail : desco@desco-inc.com



MODEL TD50 SHANK TYPE DHD350

| No | Part Name | Part No |
|----|----------------------|-----------|
| 1 | Back head | 5.0T-01 |
| 2 | B.H. O-ring | 5.0T-01-1 |
| 3 | Space ring | 5.0T-03-1 |
| 4 | Disk Spring | 5.0T-05-1 |
| 5 | Check valve | 5.0T-06 |
| 6 | Chock | 5.0T-06-1 |
| 7 | C.V spring | 5.0T-06-2 |
| 8 | Air distributor | 5.0T-08 |
| 9 | A.D. O-ring | 5.0T-08-1 |
| 10 | Inner cylinder | 5.0T-10 |
| 11 | Piston | 5.0T-11 |
| 12 | Case | 5.0T-12 |
| 13 | Piston retainer ring | 5.0T-11-1 |
| 14 | Bit. retainer ring | 5.0T-19 |
| 15 | Bit. ret. O-ring | 5.0T-19-1 |
| 16 | Chuck | 5.0T-20 |

SPECIFICATION

| | |
|------------------|--------------------|
| DTH Hammer | 5" Hammer |
| Backhead Thread | API 3*1/2 REG. Pin |
| Length | 1,112mm |
| Outside Diameter | Dia. 121mm |
| Weight | 68kg |
| Shank Type | DHD350, SD5, QL5 |

AIR CONSUMPTION CHART

| | |
|-------------------|--------|
| 150 PSI (10.5bar) | 285CFM |
| 250 PSI (17.5bar) | 520CFM |
| 350 PSI (24.5bar) | 750CFM |

Notice

The specification & drawing is based on IR shank.
So, Inner parts & specification can be different as the type of the other shanks.

DTH HAMMER 5"

DESCO INC. is at your solution and service.

Desco Inc.(HQ/Manufacturer)

HEAD OFFICE: 1240-1, Ok-Dong, Gwangsan, Gwangju, Korea

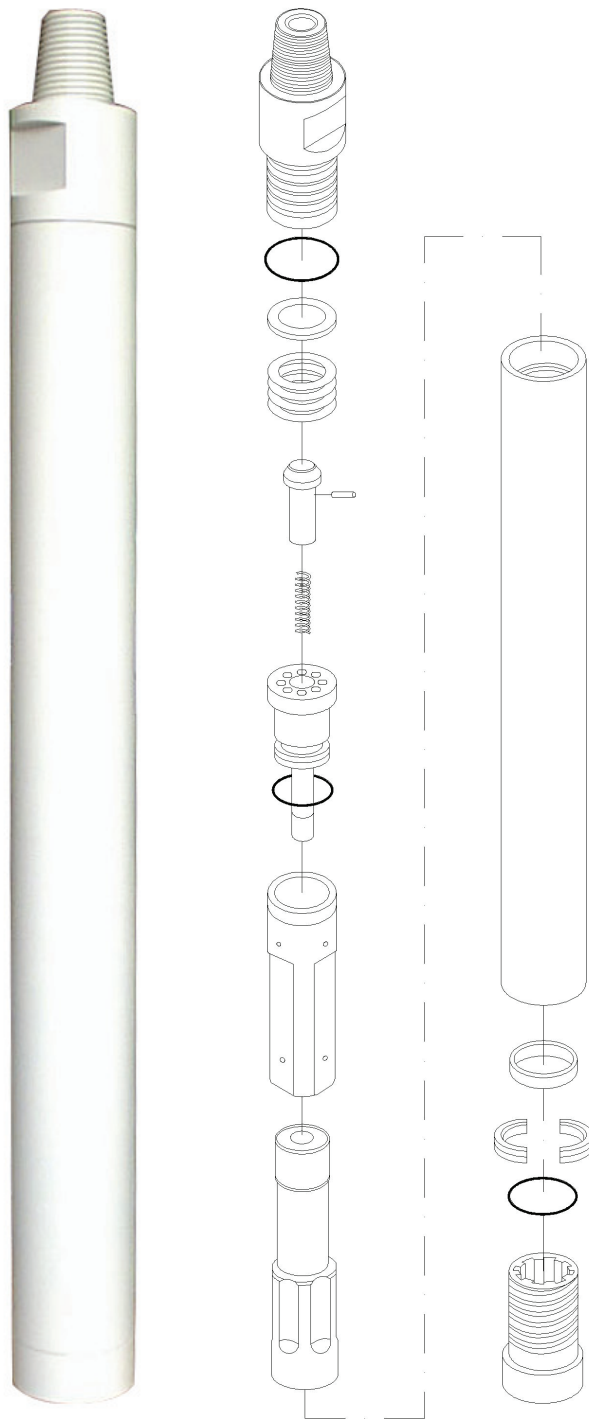
TEL : 82.62.952.4564 / FAX : 82.62.953.1593

EXPORT DIVISION

2607 jidong, Lottecastle, 76, Soongin-Dong, Jongno-Gu, Seoul, Korea

TEL : 82-2-3670 6400 / FAX : 82-2-3670 6399

E-mail : desco@desco-inc.com



MODEL TD50 SHANK TYPE SD5

| No | Part Name | Part No |
|----|----------------------|--------------|
| 1 | Back head | 5.0T-01 |
| 2 | B.H. O-ring | 5.0T-01-1 |
| 3 | Space ring | 5.0T-03-1 |
| 4 | Disk Spring | 5.0T-05-1 |
| 5 | Check valve | 5.0T-06 |
| 6 | Chock | 5.0T-06-1 |
| 7 | C.V spring | 5.0T-06-2 |
| 8 | Air distributor | 5.0T-08 |
| 9 | A.D. O-ring | 5.0T-08-1 |
| 10 | Inner cylinder | 5.0T-10 |
| 11 | Piston | 5.0T-11 |
| 12 | Case | 5.0T-12 |
| 13 | Piston retainer ring | 5.0T-11-1(S) |
| 14 | Bit. retainer ring | 5.0T-19(S) |
| 15 | Bit. ret. O-ring | 5.0T-19-1(S) |
| 16 | Chuck | 5.0T-20(S) |

SPECIFICATION

| | |
|------------------|--------------------|
| DTH Hammer | 5" Hammer |
| Backhead Thread | API 3*1/2 REG. Pin |
| Length | 1,112mm |
| Outside Diameter | Dia. 121mm |
| Weight | 68kg |
| Shank Type | DHD350, SD5, QL5 |

AIR CONSUMPTION CHART

| | |
|-------------------|--------|
| 150 PSI (10.5bar) | 285CFM |
| 250 PSI (17.5bar) | 520CFM |
| 350 PSI (24.5bar) | 750CFM |

Notice

The specification & drawing is based on IR shank.
So, Inner parts & specification can be different as the type of the other shanks.

DTH HAMMER 5"

DESCO INC. is at your solution and service.

Desco Inc.(HQ/Manufacturer)

HEAD OFFICE: 1240-1, Ok-Dong, Gwangsan, Gwangju, Korea

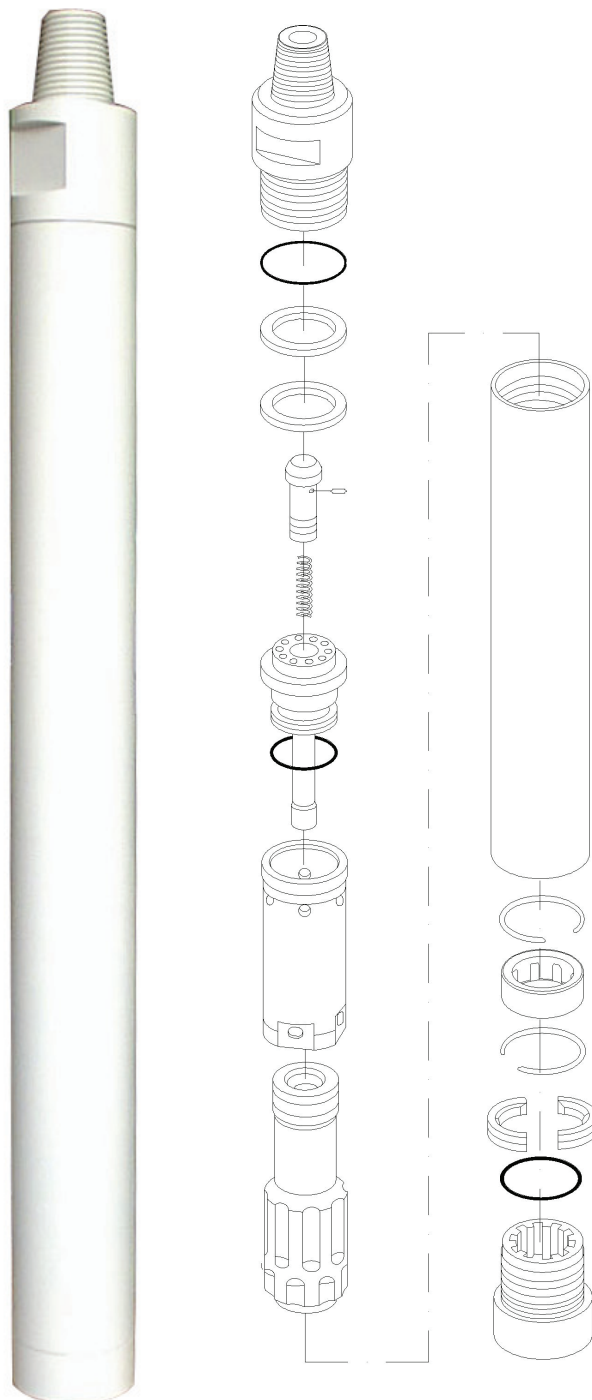
TEL : 82.62.952.4564 / FAX : 82.62.953.1593

EXPORT DIVISION

2607 jidong, Lottecastle, 76, Soongin-Dong, Jongno-Gu, Seoul, Korea

TEL : 82-2-3670 6400 / FAX : 82-2-3670 6399

E-mail : desco@desco-inc.com



MODEL ACE50 SHANK TYPE QL50

| No | Part Name | Part No |
|----|------------------------|------------|
| 1 | Back head | 5.0A-01 |
| 2 | B.H. O-ring | 5.0A-01-1 |
| 3 | Space ring | 5.0A-03-1 |
| 4 | Make-up ring(urethane) | 5.0A-04-1 |
| 5 | Check valve | 5.0A-06 |
| 6 | Chock | 5.0A-06-1 |
| 7 | C.V spring | 5.0A-06-2 |
| 8 | Air distributor | 5.0A-08 |
| 9 | A.D. O-ring | 5.0A-08-1 |
| 10 | Inner cylinder | 5.0A-10 |
| 11 | Piston | 5.0A-11 |
| 12 | Case | 5.0A-12(Q) |
| 13 | Piston retainer ring | 5.0A-11-1 |
| 14 | Bearing | 5.0A-14(Q) |
| 15 | Bit. retainer ring | 5.0A-19(Q) |
| 16 | Bit. ret. O-ring | 5.0A-19-1 |
| 17 | Chuck | 5.0A-20(Q) |

SPECIFICATION

| | |
|------------------|--------------------|
| DTH Hammer | 5" Hammer |
| Backhead Thread | API 3*1/2 REG. Pin |
| Length | 1,112mm |
| Outside Diameter | Dia. 121mm |
| Weight | 68kg |
| Shank Type | DHD350, SD5, QL5 |

AIR CONSUMPTION CHART

| | |
|-------------------|--------|
| 150 PSI (10.5bar) | 285CFM |
| 250 PSI (17.5bar) | 520CFM |
| 350 PSI (24.5bar) | 750CFM |

Notice

The specification & drawing is based on IR shank.
So, Inner parts & specification can be different as the type of the other shanks.

DTH HAMMER 6"

DESCO INC. is at your solution and service.

Desco Inc.(HQ/Manufacturer)

HEAD OFFICE: 1240-1, Ok-Dong, Gwangsan, Gwangju, Korea

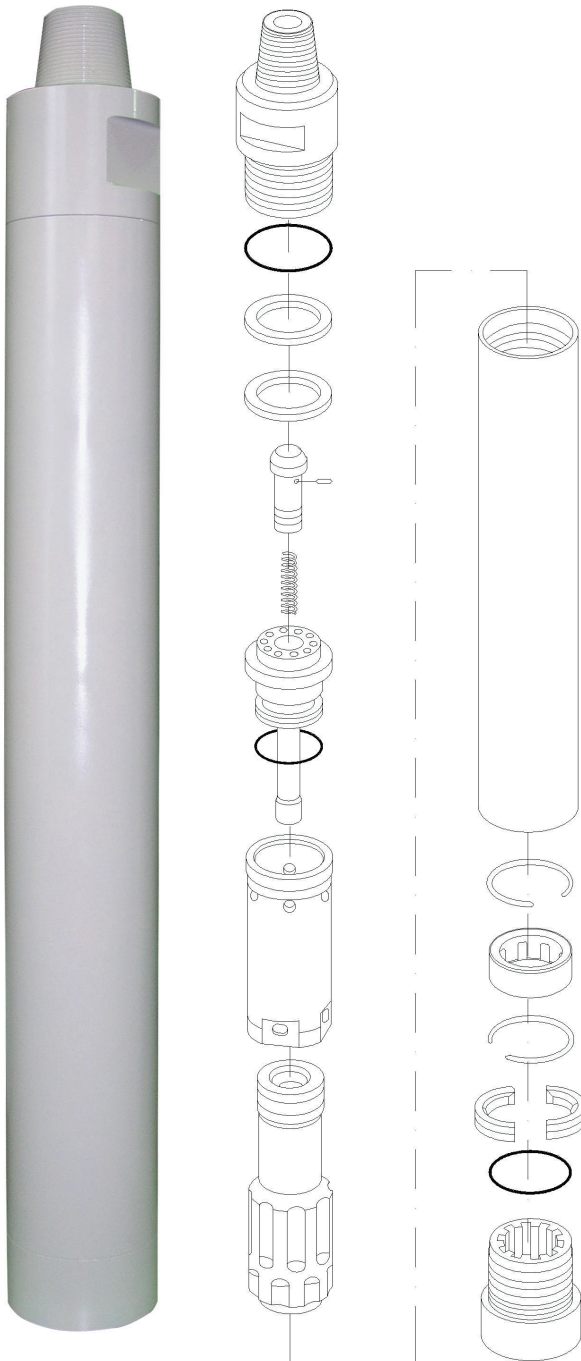
TEL : 82.62.952.4564 / FAX : 82.62.953.1593

EXPORT DIVISION

2607 jidong, Lottecastle, 76, Soongin-Dong, Jongno-Gu, Seoul, Korea

TEL : 82-2-3670 6400 / FAX : 82-2-3670 6399

E-mail : desco@desco-inc.com



MODEL ACE60 SHANK TYPE DHD360

| No | Part Name | Part No |
|----|------------------------|-----------|
| 1 | Back head | 6.0A-01 |
| 2 | B.H. O-ring | 6.0A-01-1 |
| 3 | Space ring | 6.0A-03-1 |
| 4 | Make-up ring(urethane) | 6.0A-04-1 |
| 5 | Check valve | 6.0A-06 |
| 6 | Chock | 6.0A-06-1 |
| 7 | C.V spring | 6.0A-06-2 |
| 8 | Air distributor | 6.0A-08 |
| 9 | A.D. O-ring | 6.0A-08-1 |
| 10 | Inner cylinder | 6.0A-10 |
| 11 | Piston | 6.0A-11 |
| 12 | Case | 6.0A-12 |
| 13 | Piston retainer ring | 6.0A-11-1 |
| 14 | Bearing | 6.0A-14 |
| 15 | Bit. retainer ring | 6.0A-19 |
| 16 | Bit. ret. O-ring | 6.0A-19-1 |
| 17 | Chuck | 6.0A-20 |

SPECIFICATION

| | |
|------------------|--------------------|
| DTH Hammer | 6" Hammer |
| Backhead Thread | API 3*1/2 REG. Pin |
| Length | 921mm |
| Outside Diameter | Dia. 142mm |
| Weight | 79kg |
| Shank Type | DHD360, SD6, QL60 |

AIR CONSUMPTION CHART

| | |
|-------------------|---------|
| 150 PSI (10.5bar) | 390CFM |
| 250 PSI (17.5bar) | 710CFM |
| 350 PSI (24.5bar) | 1020CFM |

Notice

The specification & drawing is based on IR shank.
So, Inner parts & specification can be different as the type of the other shanks.

DTH HAMMER 6"

DESCO INC. is at your solution and service.

Desco Inc.(HQ/Manufacturer)

HEAD OFFICE: 1240-1, Ok-Dong, Gwangsan, Gwangju, Korea

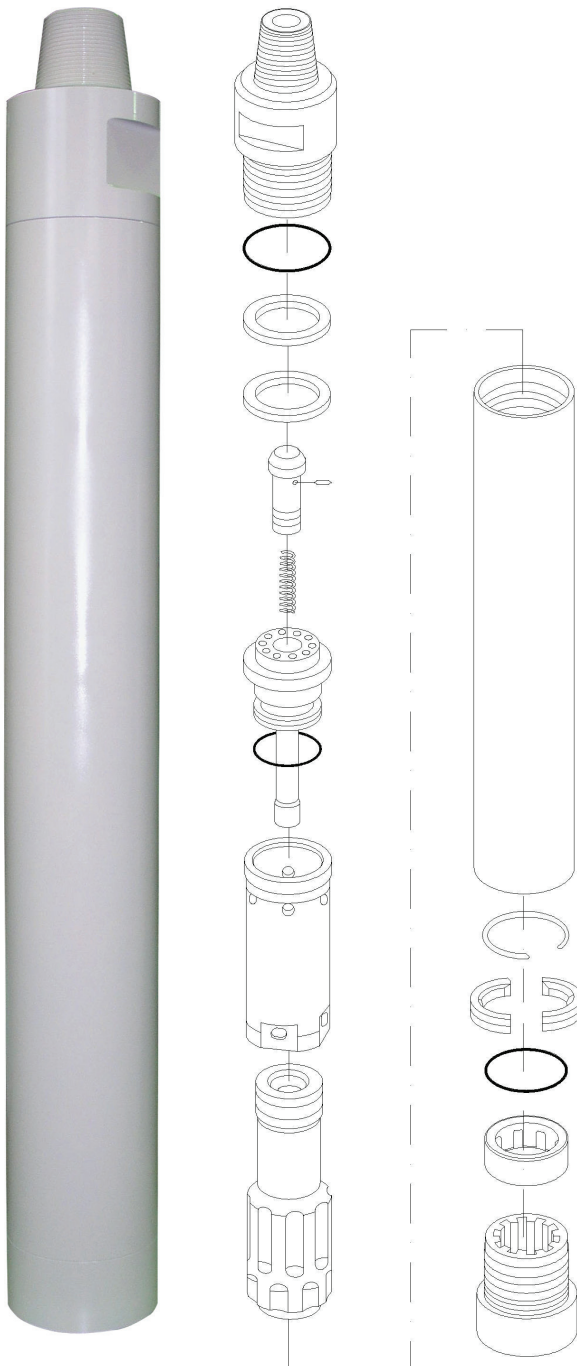
TEL : 82.62.952.4564 / FAX : 82.62.953.1593

EXPORT DIVISION

2607 jidong, Lottecastle, 76, Soongin-Dong, Jongno-Gu, Seoul, Korea

TEL : 82-2-3670 6400 / FAX : 82-2-3670 6399

E-mail : desco@desco-inc.com



MODEL ACE60 SHANK TYPE SD6

| No | Part Name | Part No |
|----|------------------------|------------|
| 1 | Back head | 6.0A-01 |
| 2 | B.H. O-ring | 6.0A-01-1 |
| 3 | Space ring | 6.0A-03-1 |
| 4 | Make-up ring(urethane) | 6.0A-04-1 |
| 5 | Check valve | 6.0A-06 |
| 6 | Chock | 6.0A-06-1 |
| 7 | C.V spring | 6.0A-06-2 |
| 8 | Air distributor | 6.0A-08 |
| 9 | A.D. O-ring | 6.0A-08-1 |
| 10 | Inner cylinder | 6.0A-10 |
| 11 | Piston | 6.0A-11 |
| 12 | Case | 6.0A-12 |
| 13 | Piston retainer ring | 6.0A-11-1 |
| 14 | Bearing | 6.0A-19 |
| 15 | Bit. retainer ring | 6.0A-19-1 |
| 16 | Bit. ret. O-ring | 6.0A-14(S) |
| 17 | Chuck | 6.0A-20 |

SPECIFICATION

| | |
|------------------|--------------------|
| DTH Hammer | 6" Hammer |
| Backhead Thread | API 3*1/2 REG. Pin |
| Length | 921mm |
| Outside Diameter | Dia. 142mm |
| Weight | 79kg |
| Shank Type | DHD360, SD6, QL60 |

AIR CONSUMPTION CHART

| | |
|-------------------|---------|
| 150 PSI (10.5bar) | 390CFM |
| 250 PSI (17.5bar) | 710CFM |
| 350 PSI (24.5bar) | 1020CFM |

Notice

The specification & drawing is based on IR shank.
So, Inner parts & specification can be different as the type of the other shanks.

DTH HAMMER 6"

DESCO INC. is at your solution and service.

Desco Inc.(HQ/Manufacturer)

HEAD OFFICE: 1240-1, Ok-Dong, Gwangsan, Gwangju, Korea

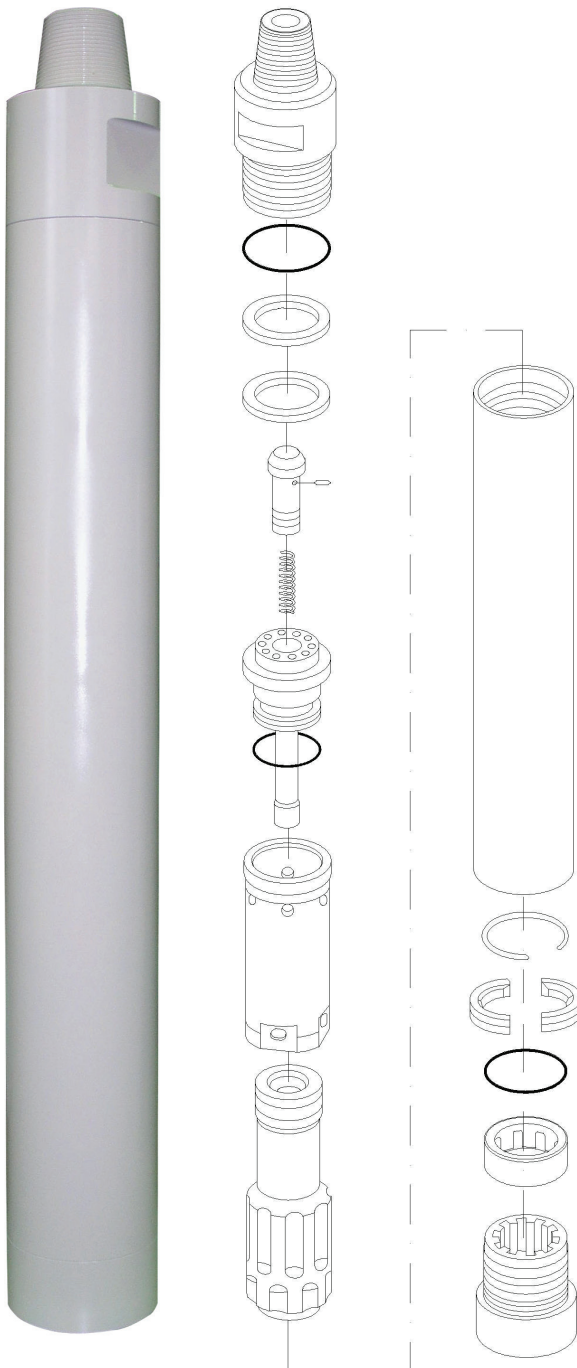
TEL : 82.62.952.4564 / FAX : 82.62.953.1593

EXPORT DIVISION

2607 jidong, Lottecastle, 76, Soongin-Dong, Jongno-Gu, Seoul, Korea

TEL : 82-2-3670 6400 / FAX : 82-2-3670 6399

E-mail : desco@desco-inc.com



MODEL ACE60 SHANK TYPE QL60

| No | Part Name | Part No |
|----|------------------------|------------|
| 1 | Back head | 6.0A-01 |
| 2 | B.H. O-ring | 6.0A-01-1 |
| 3 | Space ring | 6.0A-03-1 |
| 4 | Make-up ring(urethane) | 6.0A-04-1 |
| 5 | Check valve | 6.0A-06 |
| 6 | Chock | 6.0A-06-1 |
| 7 | C.V spring | 6.0A-06-2 |
| 8 | Air distributor | 6.0A-08 |
| 9 | A.D. O-ring | 6.0A-08-1 |
| 10 | Inner cylinder | 6.0A-10 |
| 11 | Piston | 6.0A-11 |
| 12 | Case | 6.0A-12(Q) |
| 13 | Piston retainer ring | 6.0A-11-1 |
| 14 | Bearing | 6.0A-14(Q) |
| 15 | Bit. retainer ring | 6.0A-19(Q) |
| 16 | Bit. ret. O-ring | 6.0A-19-1 |
| 17 | Chuck | 6.0A-20(Q) |

SPECIFICATION

| | |
|------------------|--------------------|
| DTH Hammer | 6" Hammer |
| Backhead Thread | API 3*1/2 REG. Pin |
| Length | 921mm |
| Outside Diameter | Dia. 142mm |
| Weight | 79kg |
| Shank Type | DHD360, SD6, QL60 |

AIR CONSUMPTION CHART

| | |
|-------------------|---------|
| 150 PSI (10.5bar) | 390CFM |
| 250 PSI (17.5bar) | 710CFM |
| 350 PSI (24.5bar) | 1020CFM |

Notice

The specification & drawing is based on IR shank.
So, Inner parts & specification can be different as the type of the other shanks.

DTH HAMMER 8"

DESCO INC. is at your solution and service.

Desco Inc.(HQ/Manufacturer)

HEAD OFFICE: 1240-1, Ok-Dong, Gwangsan, Gwangju, Korea

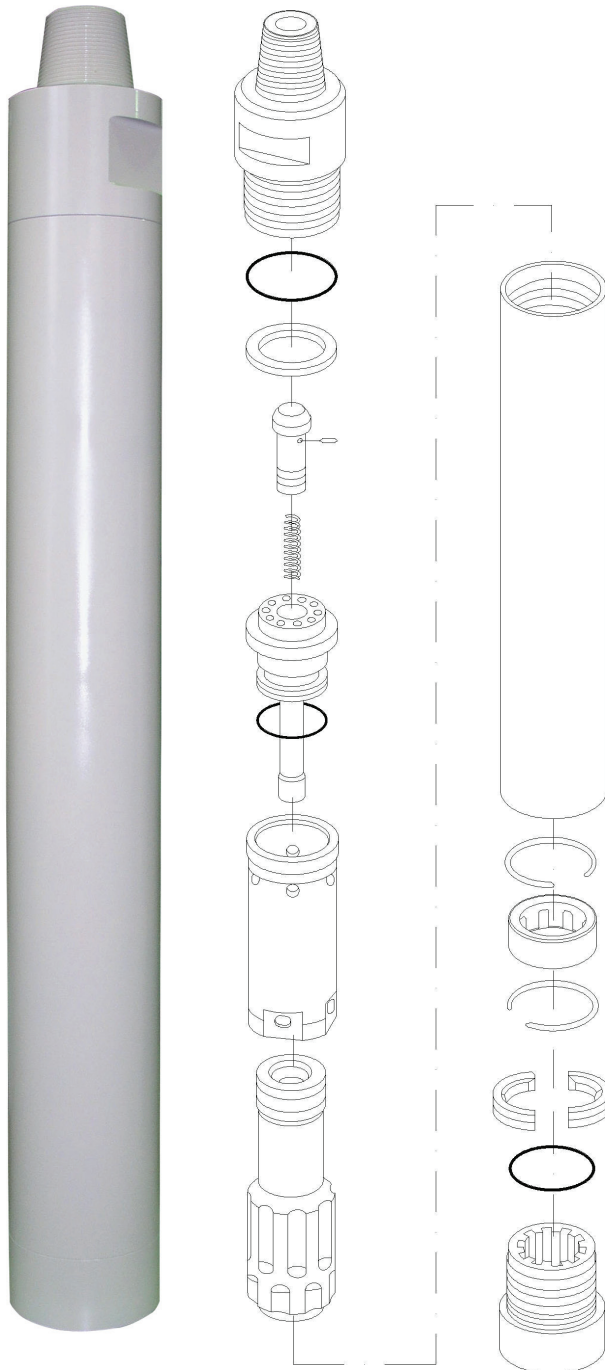
TEL : 82.62.952.4564 / FAX : 82.62.953.1593

EXPORT DIVISION

2607 jidong, Lottecastle, 76, Soongin-Dong, Jongno-Gu, Seoul, Korea

TEL : 82-2-3670 6400 / FAX : 82-2-3670 6399

E-mail : desco@desco-inc.com



MODEL ACE80 SHANK TYPE DHD380

| No | Part Name | Part No |
|----|------------------------|-----------|
| 1 | Back head | 8.0A-01 |
| 2 | B.H. O-ring | 8.0A-01-1 |
| 3 | Make-up ring(urethane) | 8.0A-04-1 |
| 4 | Check valve | 8.0A-06 |
| 5 | Chock | 8.0A-06-1 |
| 6 | C.V spring | 8.0A-06-2 |
| 7 | Air distributor | 8.0A-08 |
| 8 | A.D. O-ring | 8.0A-08-1 |
| 9 | Inner cylinder | 8.0A-10 |
| 10 | Piston | 8.0A-11 |
| 11 | Case | 8.0A-12 |
| 12 | Piston retainer ring | 8.0A-11-1 |
| 13 | Bearing | 8.0A-14 |
| 14 | Bit. retainer ring | 8.0A-19 |
| 15 | Bit. ret. O-ring | 8.0A-19-1 |
| 16 | Chuck | 8.0A-20 |

SPECIFICATION

| | |
|------------------|--------------------|
| DTH Hammer | 8" Hammer |
| Backhead Thread | API 4*1/2 REG. Pin |
| Length | 1,310mm |
| Outside Diameter | Dia. 182mm |
| Weight | 184kg |
| Shank Type | DHD380, SD8, QL80 |

AIR CONSUMPTION CHART

| | |
|-------------------|---------|
| 150 PSI (10.5bar) | 610CFM |
| 250 PSI (17.5bar) | 1070CFM |
| 350 PSI (21bar) | 1600CFM |

Notice

The specification & drawing is based on IR shank.
So, Inner parts & specification can be different as the type of the other shanks.

DTH HAMMER 8"

DESCO INC. is at your solution and service.

Desco Inc.(HQ/Manufacturer)

HEAD OFFICE: 1240-1, Ok-Dong, Gwangsan, Gwangju, Korea

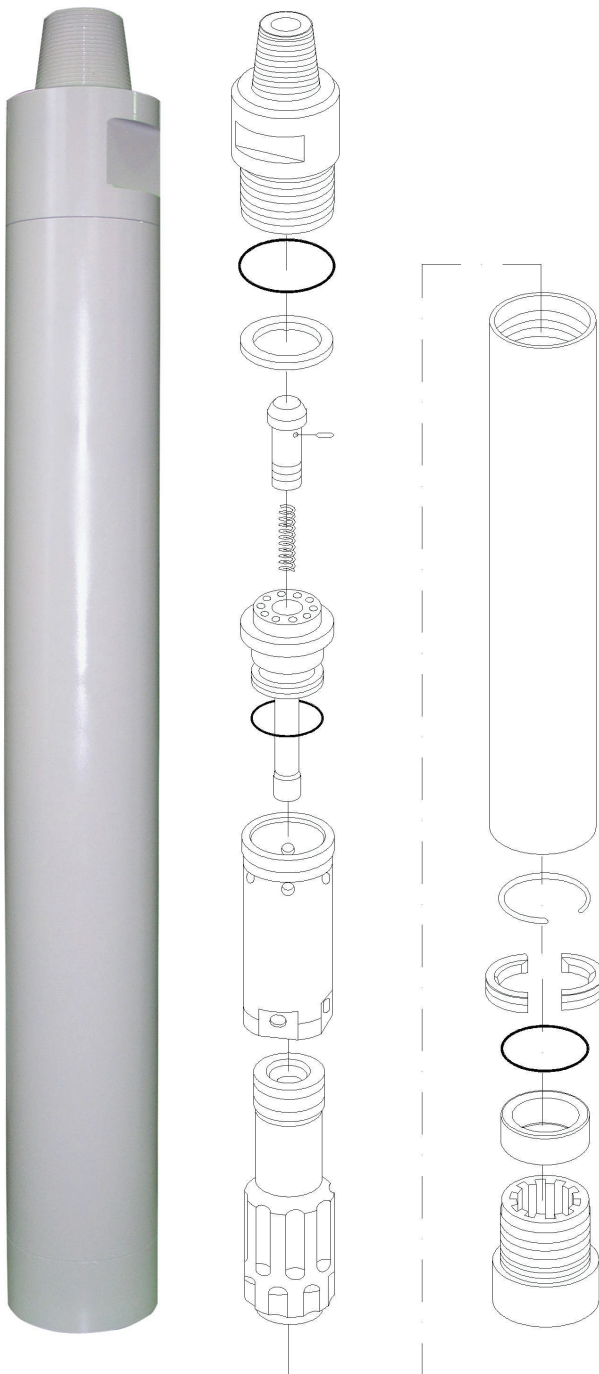
TEL : 82.62.952.4564 / FAX : 82.62.953.1593

EXPORT DIVISION

2607 jidong, Lottecastle, 76, Soongin-Dong, Jongno-Gu, Seoul, Korea

TEL : 82-2-3670 6400 / FAX : 82-2-3670 6399

E-mail : desco@desco-inc.com



MODEL ACE80 SHANK TYPE SD8

| No | Part Name | Part No |
|----|------------------------|------------|
| 1 | Back head | 8.0A-01 |
| 2 | B.H. O-ring | 8.0A-01-1 |
| 3 | Make-up ring(urethane) | 8.0A-04-1 |
| 4 | Check valve | 8.0A-06 |
| 5 | Chock | 8.0A-06-1 |
| 6 | C.V spring | 8.0A-06-2 |
| 7 | Air distributor | 8.0A-08 |
| 8 | A.D. O-ring | 8.0A-08-1 |
| 9 | Inner cylinder | 8.0A-10 |
| 10 | Piston | 8.0A-11(S) |
| 11 | Case | 8.0A-12(S) |
| 12 | Piston retainer ring | 8.0A-11-1 |
| 13 | Bearing | 8.0A-14(S) |
| 14 | Bit. retainer ring | 8.0A-19(S) |
| 15 | Bit. ret. O-ring | 8.0A-19-1 |
| 16 | Chuck | 8.0A-20(S) |

SPECIFICATION

| | |
|------------------|--------------------|
| DTH Hammer | 8" Hammer |
| Backhead Thread | API 4*1/2 REG. Pin |
| Length | 1,310mm |
| Outside Diameter | Dia. 182mm |
| Weight | 184kg |
| Shank Type | DHD380, SD8, QL80 |

AIR CONSUMPTION CHART

| | |
|-------------------|---------|
| 150 PSI (10.5bar) | 610CFM |
| 250 PSI (17.5bar) | 1070CFM |
| 350 PSI (21bar) | 1600CFM |

Notice

The specification & drawing is based on IR shank.
So, Inner parts & specification can be different as the type of the other shanks.

DTH HAMMER 8"

DESCO INC. is at your solution and service.

Desco Inc.(HQ/Manufacturer)

HEAD OFFICE: 1240-1, Ok-Dong, Gwangsan, Gwangju, Korea

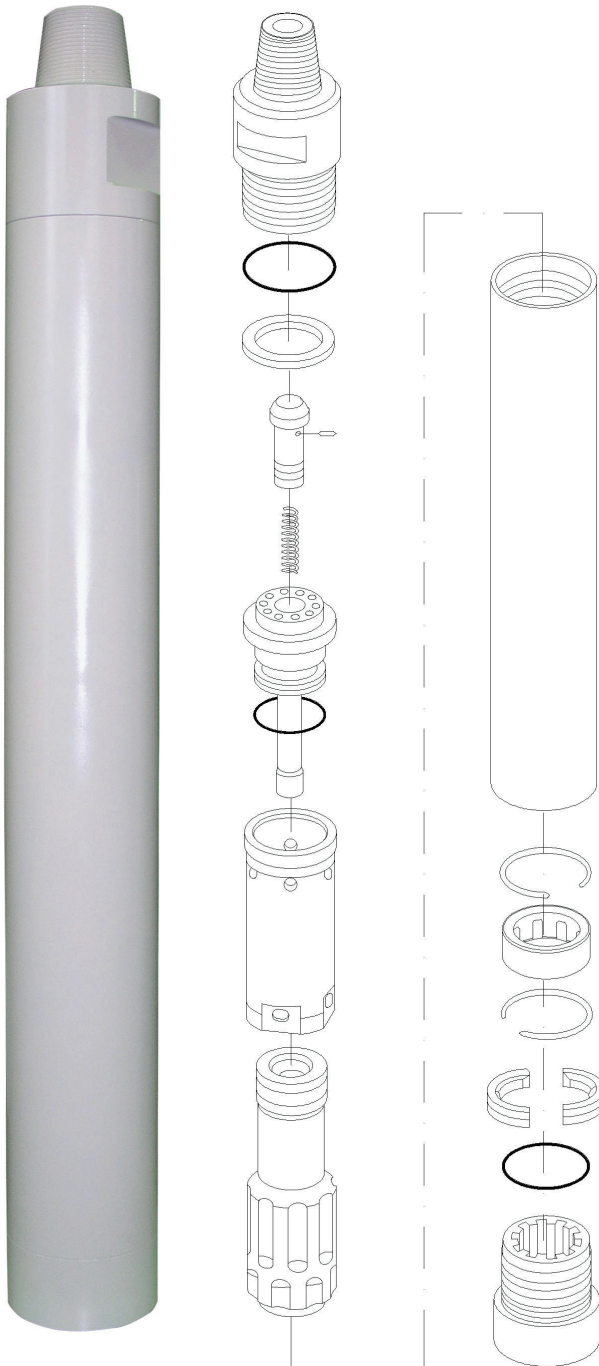
TEL : 82.62.952.4564 / FAX : 82.62.953.1593

EXPORT DIVISION

2607 jidong, Lottecastle, 76, Soongin-Dong, Jongno-Gu, Seoul, Korea

TEL : 82-2-3670 6400 / FAX : 82-2-3670 6399

E-mail : desco@desco-inc.com



MODEL ACE80 SHANK TYPE QL80

| No | Part Name | Part No |
|----|------------------------|------------|
| 1 | Back head | 8.0A-01 |
| 2 | B.H. O-ring | 8.0A-01-1 |
| 3 | Make-up ring(urethane) | 8.0A-04-1 |
| 4 | Check valve | 8.0A-06 |
| 5 | Chock | 8.0A-06-1 |
| 6 | C.V spring | 8.0A-06-2 |
| 7 | Air distributor | 8.0A-08 |
| 8 | A.D. O-ring | 8.0A-08-1 |
| 9 | Inner cylinder | 8.0A-10 |
| 10 | Piston | 8.0A-11(Q) |
| 11 | Case | 8.0A-12(Q) |
| 12 | Piston retainer ring | 8.0A-11-1 |
| 13 | Bearing | 8.0A-14(Q) |
| 14 | Bit. retainer ring | 8.0A-19(Q) |
| 15 | Bit. ret. O-ring | 8.0A-19-1 |
| 16 | Chuck | 8.0A-20(Q) |

SPECIFICATION

| | |
|------------------|--------------------|
| DTH Hammer | 8" Hammer |
| Backhead Thread | API 4*1/2 REG. Pin |
| Length | 1,310mm |
| Outside Diameter | Dia. 182mm |
| Weight | 184kg |
| Shank Type | DHD380, SD8, QL80 |

AIR CONSUMPTION CHART

| | |
|-------------------|---------|
| 150 PSI (10.5bar) | 610CFM |
| 250 PSI (17.5bar) | 1070CFM |
| 350 PSI (21bar) | 1600CFM |

Notice

The specification & drawing is based on IR shank.
So, Inner parts & specification can be different as the type of the other shanks.

DTH HAMMER 10"

DESCO INC. is at your solution and service.

desco drill rig

Desco Inc.(HQ/Manufacturer)

HEAD OFFICE: 1240-1, Ok-Dong, Gwangsan, Gwangju, Korea

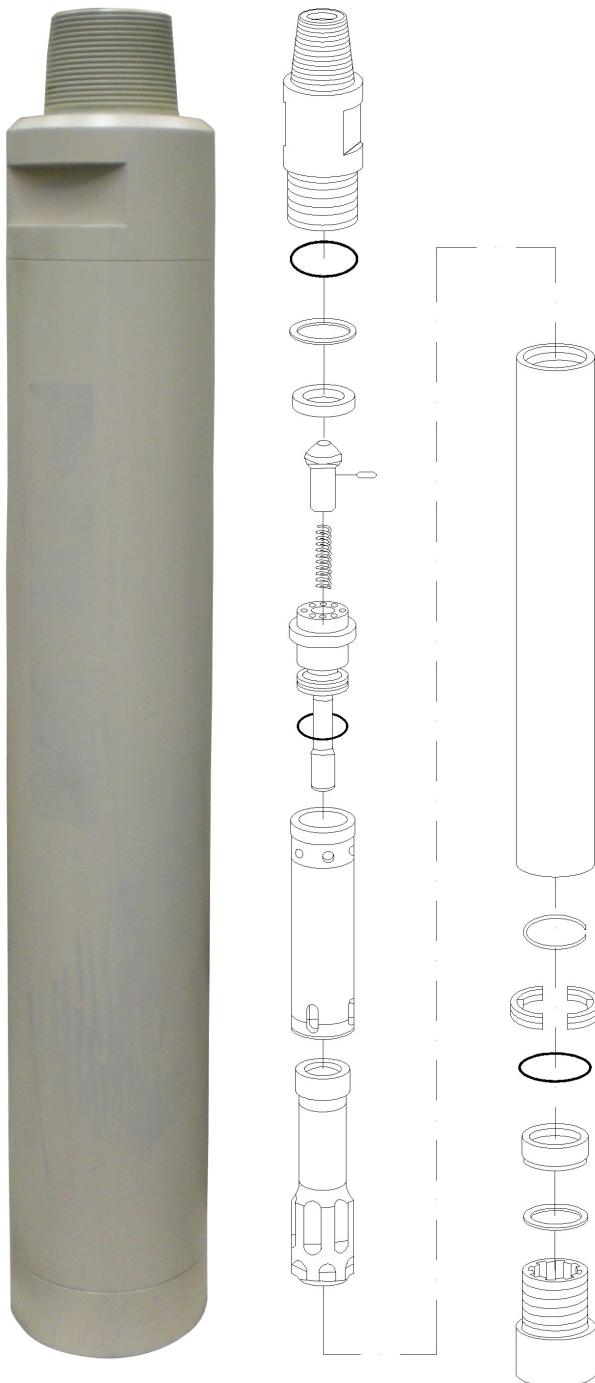
TEL : 82.62.952.4564 / FAX : 82.62.953.1593

EXPORT DIVISION

2607 jidong, Lottecastle, 76, Soongin-Dong, Jongno-Gu, Seoul, Korea

TEL : 82-2-3670 6400 / FAX : 82-2-3670 6399

E-mail : desco@desco-inc.com



MODEL TD100 SHANK TYPE N100

| No | Part Name | Part No |
|----|------------------------|-------------|
| 1 | Back head | 10T-01(N) |
| 2 | B.H. O-ring | 10T-01-1 |
| 3 | Make-up ring(urethane) | 10T-04-1 |
| 4 | Check valve | 10T-06 |
| 5 | Chock | 10T-06-1 |
| 6 | C.V spring | 10T-06-2 |
| 7 | Air distributor | 10T-08(N) |
| 8 | A.D. O-ring | 10T-08-1 |
| 9 | Inner cylinder | 10T-10(N) |
| 10 | Piston | 10T-11(N) |
| 11 | Case | 10T-12(N) |
| 12 | Piston retainer ring | 10T-11-1(N) |
| 13 | Bit. retainer ring | 10T-19(N) |
| 14 | Bit. ret. O-ring | 10T-19-1 |
| 15 | Chuck | 10T-20(N) |

SPECIFICATION

| | |
|------------------|--------------------|
| DTH Hammer | 10" Hammer |
| Backhead Thread | API 6*5/8 REG. Pin |
| Length | 1,385mm |
| Outside Diameter | Dia. 225mm |
| Weight | 325kg |
| Shank Type | SD10, NUMA100 |

AIR CONSUMPTION CHART

| | |
|-------------------|---------|
| 150 PSI (10.5bar) | 690CFM |
| 200 PSI (14bar) | 980CFM |
| 250 PSI (17.5bar) | 1290CFM |
| 350 PSI (24.5bar) | 1610CFM |

Notice

The specification & drawing is based on IR shank.
So, Inner parts & specification can be different as the type of the other shanks.

DTH HAMMER 10"

DESCO INC. is at your solution and service.

desco drill rig

Desco Inc.(HQ/Manufacturer)

HEAD OFFICE: 1240-1, Ok-Dong, Gwangsan, Gwangju, Korea

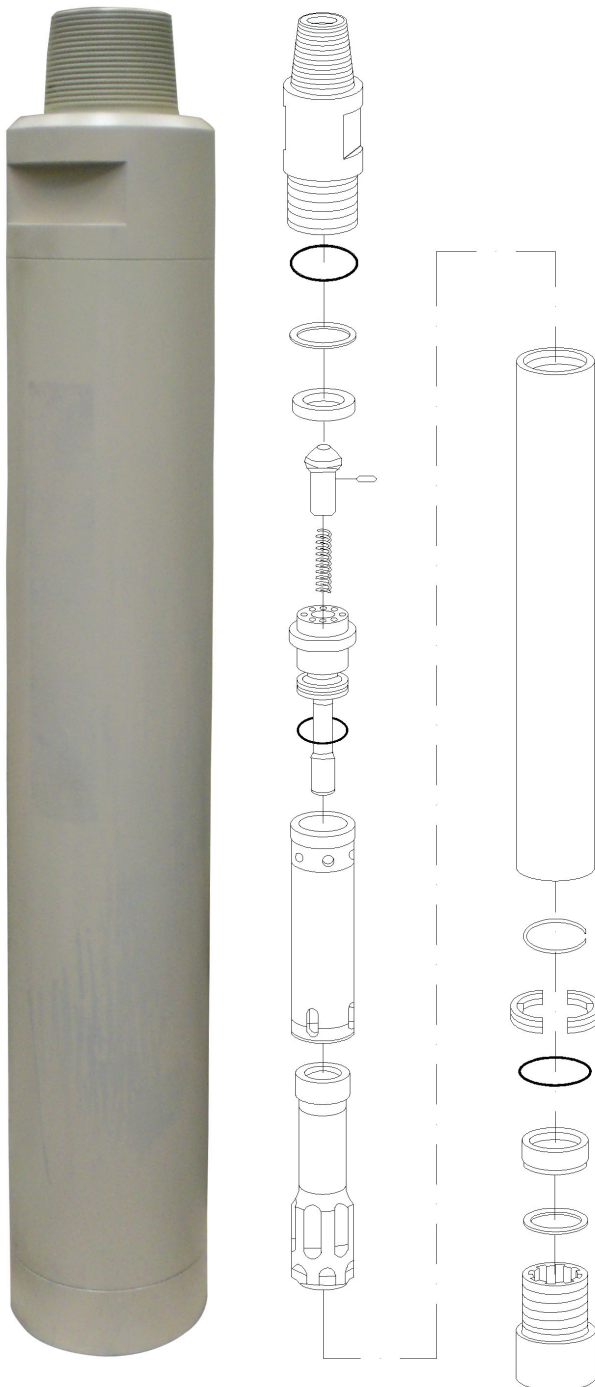
TEL : 82.62.952.4564 / FAX : 82.62.953.1593

EXPORT DIVISION

2607 jidong, Lottecastle, 76, Soongin-Dong, Jongno-Gu, Seoul, Korea

TEL : 82-2-3670 6400 / FAX : 82-2-3670 6399

E-mail : desco@desco-inc.com



MODEL TD100 SHANK TYPE SD10

| No | Part Name | Part No |
|----|------------------------|-------------|
| 1 | Back head | 10T-01(S) |
| 2 | B.H. O-ring | 10T-01-1 |
| 3 | Space ring | 10T-02-1(S) |
| 4 | Make-up ring(urethane) | 10T-04-1 |
| 5 | Check valve | 10T-06 |
| 6 | Chock | 10T-06-1 |
| 7 | C.V spring | 10T-06-2 |
| 8 | Air distributor | 10T-08(S) |
| 9 | A.D. O-ring | 10T-08-1 |
| 10 | Inner cylinder | 10T-10(S) |
| 11 | Piston | 10T-11(S) |
| 12 | Case | 10T-12(S) |
| 13 | Piston retainer ring | 10T-11-1(S) |
| 14 | Bearing | 10T-19(S) |
| 15 | Bit. retainer ring | 10T-19-1 |
| 16 | Bit. ret. O-ring | 10T-14(S) |
| 17 | Chuck | 10T-20(S) |

SPECIFICATION

| | |
|------------------|--------------------|
| DTH Hammer | 10" Hammer |
| Backhead Thread | API 6*5/8 REG. Pin |
| Length | 1,385mm |
| Outside Diameter | Dia. 225mm |
| Weight | 325kg |
| Shank Type | SD10, NUMA100 |

AIR CONSUMPTION CHART

| | |
|-------------------|---------|
| 150 PSI (10.5bar) | 690CFM |
| 200 PSI (14bar) | 980CFM |
| 250 PSI (17.5bar) | 1290CFM |
| 350 PSI (24.5bar) | 1610CFM |

Notice

The specification & drawing is based on IR shank.
So, Inner parts & specification can be different as the type of the other shanks.

DTH HAMMER 12"

DESCO INC. is at your solution and service.

Desco Inc.(HQ/Manufacturer)

HEAD OFFICE: 1240-1, Ok-Dong, Gwangsan, Gwangju, Korea

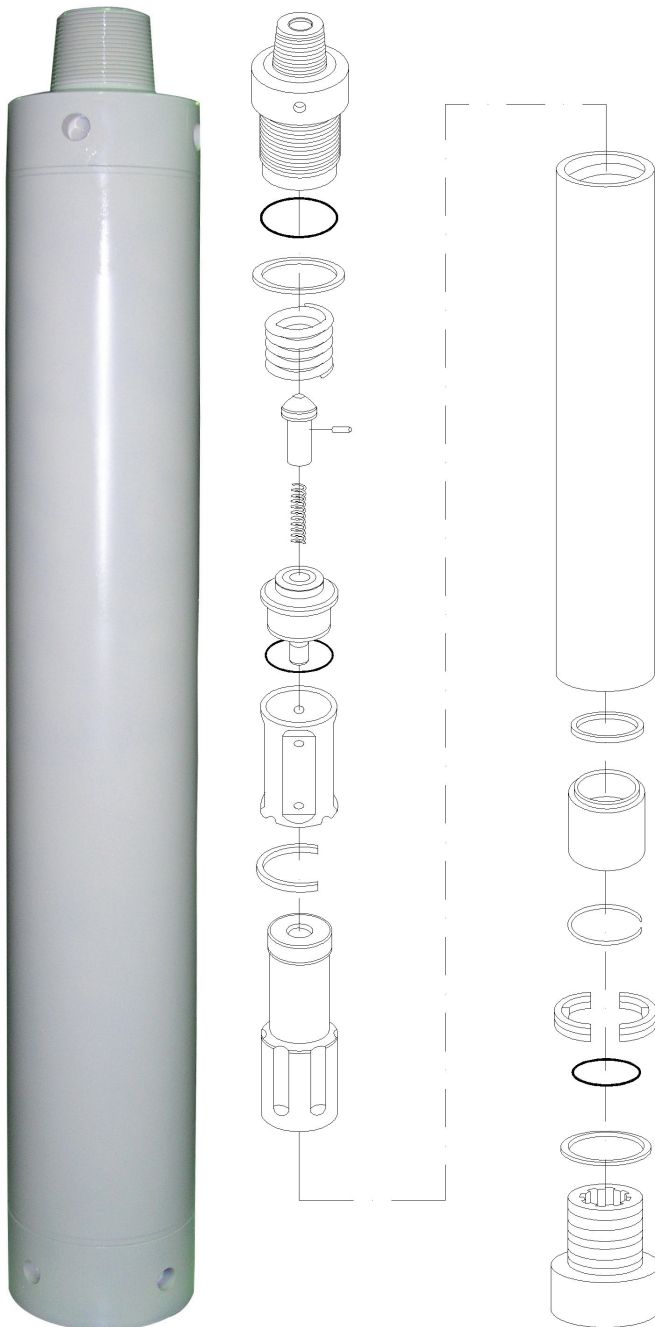
TEL : 82.62.952.4564 / FAX : 82.62.953.1593

EXPORT DIVISION

2607 jidong, Lottecastle, 76, Soongin-Dong, Jongno-Gu, Seoul, Korea

TEL : 82-2-3670 6400 / FAX : 82-2-3670 6399

E-mail : desco@desco-inc.com



MODEL TD112 SHANK TYPE DHD112

| No | Part Name | Part No |
|----|------------------------|----------|
| 1 | Back head | 12T-01 |
| 2 | B.H. O-ring | 12T-01-1 |
| 3 | Space ring - 2ea | 12T-03-1 |
| 4 | Spring | 12T-05-1 |
| 5 | Check valve | 12T-06 |
| 6 | Chock | 12T-06-1 |
| 7 | C.V spring | 12T-06-2 |
| 8 | Air distributor | 12T-08 |
| 9 | A.D. O-ring | 12T-08-1 |
| 10 | Inner cylinder | 12T-10 |
| 11 | Cylinder retainer ring | 12T-10 |
| 12 | Piston | 12T-11 |
| 13 | Case | 12T-12 |
| 14 | Piston retainer ring | 12T-11-1 |
| 15 | Bearing | 12T-14 |
| 16 | Bearing retainer ring | 12T-14-1 |
| 17 | Bit. retainer ring | 12T-19 |
| 18 | Bit. ret. O-ring | 12T-19-1 |
| 19 | Chuck | 12T-20 |

SPECIFICATION

| | |
|------------------|--------------------|
| DTH Hammer | 12" Hammer |
| Backhead Thread | API 6*5/8 REG. Pin |
| Length | 1,788mm |
| Outside Diameter | Dia. 274mm |
| Weight | 615kg |
| Shank Type | DHD112, SD12, N120 |

AIR CONSUMPTION CHART

| | |
|-------------------|---------|
| 150 PSI (10.5bar) | 880CFM |
| 200 PSI (14bar) | 1250CFM |
| 250 PSI (17.5bar) | 1700CFM |

Notice

The specification & drawing is based on IR shank.
So, Inner parts & specification can be different as the type of the other shanks.

DTH HAMMER 12"

DESCO INC. is at your solution and service.

Desco Inc.(HQ/Manufacturer)

HEAD OFFICE: 1240-1, Ok-Dong, Gwangsan, Gwangju, Korea

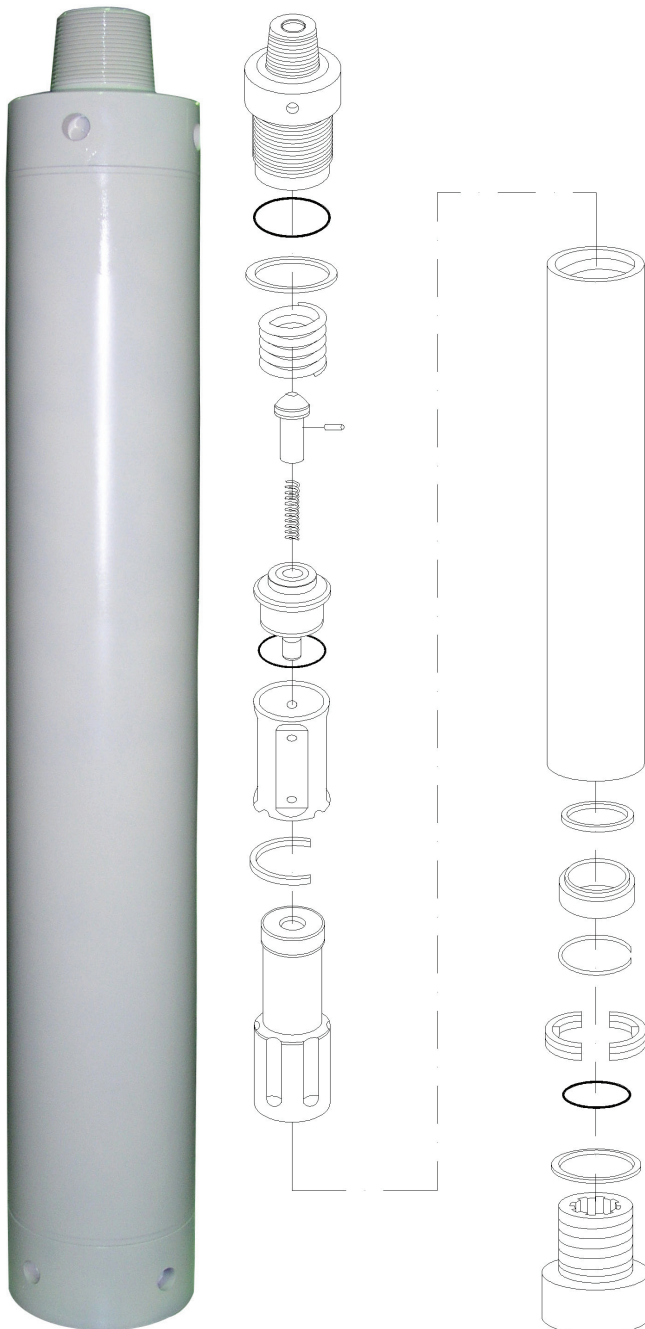
TEL : 82.62.952.4564 / FAX : 82.62.953.1593

EXPORT DIVISION

2607 jidong, Lottecastle, 76, Soongin-Dong, Jongno-Gu, Seoul, Korea

TEL : 82-2-3670 6400 / FAX : 82-2-3670 6399

E-mail : desco@desco-inc.com



MODEL TD112 SHANK TYPE SD12

| No | Part Name | Part No |
|----|------------------------|-----------|
| 1 | Back head | 12T-01 |
| 2 | B.H. O-ring | 12T-01-1 |
| 3 | Space ring - 2ea | 12T-03-1 |
| 4 | Spring | 12T-05-1 |
| 5 | Check valve | 12T-06 |
| 6 | Chock | 12T-06-1 |
| 7 | C.V spring | 12T-06-2 |
| 8 | Air distributor | 12T-08 |
| 9 | A.D. O-ring | 12T-08-1 |
| 10 | Inner cylinder | 12T-10 |
| 11 | Cylinder retainer ring | 12T-10-1 |
| 12 | Piston | 12T-11 |
| 13 | Case | 12T-12 |
| 14 | Piston retainer ring | 12T-11-1 |
| 15 | Bearing | 12T-14(S) |
| 16 | Bearing retainer ring | 12T-14-1 |
| 17 | Bit. retainer ring | 12T-19(S) |
| 18 | Bit. ret. O-ring | 12T-19-1 |
| 19 | Chuck | 12T-20(S) |

SPECIFICATION

| | |
|------------------|--------------------|
| DTH Hammer | 12" Hammer |
| Backhead Thread | API 6*5/8 REG. Pin |
| Length | 1,788mm |
| Outside Diameter | Dia. 274mm |
| Weight | 615kg |
| Shank Type | DHD112, SD12, N120 |

AIR CONSUMPTION CHART

| | |
|-------------------|---------|
| 150 PSI (10.5bar) | 880CFM |
| 200 PSI (14bar) | 1250CFM |
| 250 PSI (17.5bar) | 1700CFM |

Notice

The specification & drawing is based on IR shank.
So, Inner parts & specification can be different as the type of the other shanks.

DTH HAMMER 15"

DESCO INC. is at your solution and service.

Desco Inc.(HQ/Manufacturer)

HEAD OFFICE: 1240-1, Ok-Dong, Gwangsan, Gwangju, Korea

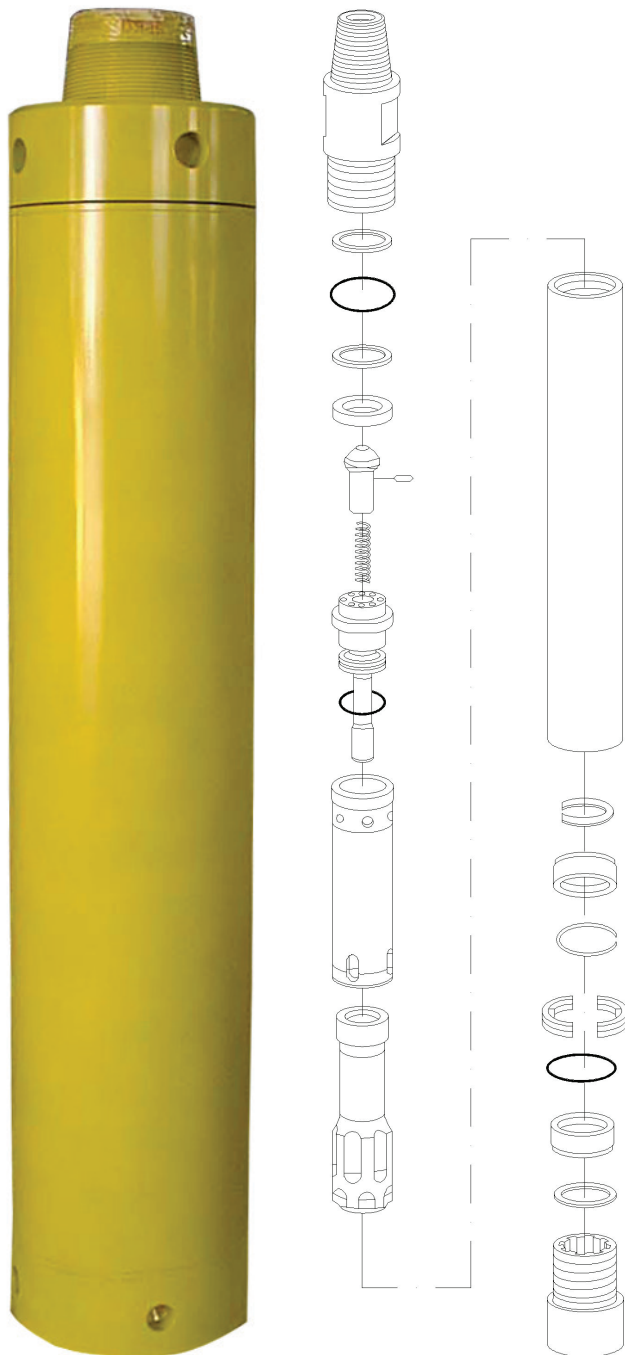
TEL : 82.62.952.4564 / FAX : 82.62.953.1593

EXPORT DIVISION

2607 jidong, Lottecastle, 76, Soongin-Dong, Jongno-Gu, Seoul, Korea

TEL : 82-2-3670 6400 / FAX : 82-2-3670 6399

E-mail : desco@desco-inc.com



MODEL ACE380 SHANK TYPE SD15

| No | Part Name | Part No |
|----|-------------------------|----------|
| 1 | Back head | 15A-01 |
| 2 | Washer (upper) | 15A-02-1 |
| 3 | B.H. O-ring | 15A-01-1 |
| 4 | Space ring | 15A-03-1 |
| 5 | Make-up ring (urethane) | 15A-04-1 |
| 6 | Check valve | 15A-06 |
| 7 | Chock | 15A-06-1 |
| 8 | C.V spring | 15A-06-1 |
| 9 | Air distributor | 15A-08 |
| 10 | A.D. O-ring | 15A-08-1 |
| 11 | Inner cylinder | 15A-10 |
| 12 | Piston | 15A-11 |
| 13 | Case | 15A-12 |
| 14 | Piston retainer ring | 15A-11-1 |
| 15 | Bearing (upper) | 15A-14 |
| 16 | Bearing retainer ring | 15A-14-1 |
| 17 | Bit. retainer ring | 15A-19 |
| 18 | Bit. ret. O-ring | 15A-19-1 |
| 19 | Bearing (lower) | 15A-15 |
| 20 | Washer (lower) | 15A-02-2 |
| 21 | Chuck | 15A-20 |

SPECIFICATION

| | |
|------------------|---|
| DTH Hammer | 15" Hammer |
| Backhead Thread | API 8*5/8 REG. Pin Hex. Joint - H120 |
| Length | 1,660mm |
| Outside Diameter | Dia. 376mm |
| Weight | 1,140kg |
| Shank Type | SD15 |

AIR CONSUMPTION CHART

| | |
|-------------------|---------|
| 150 PSI (10.5bar) | 1890CFM |
| 250 PSI (14bar) | 3600CFM |

Notice

The specification & drawing is based on IR shank.
So, Inner parts & specification can be different as the type of the other shanks.

DTH HAMMER 18"

DESCO INC. is at your solution and service.

desco drill rig

Desco Inc.(HQ/Manufacturer)

HEAD OFFICE: 1240-1, Ok-Dong, Gwangsan, Gwangju, Korea

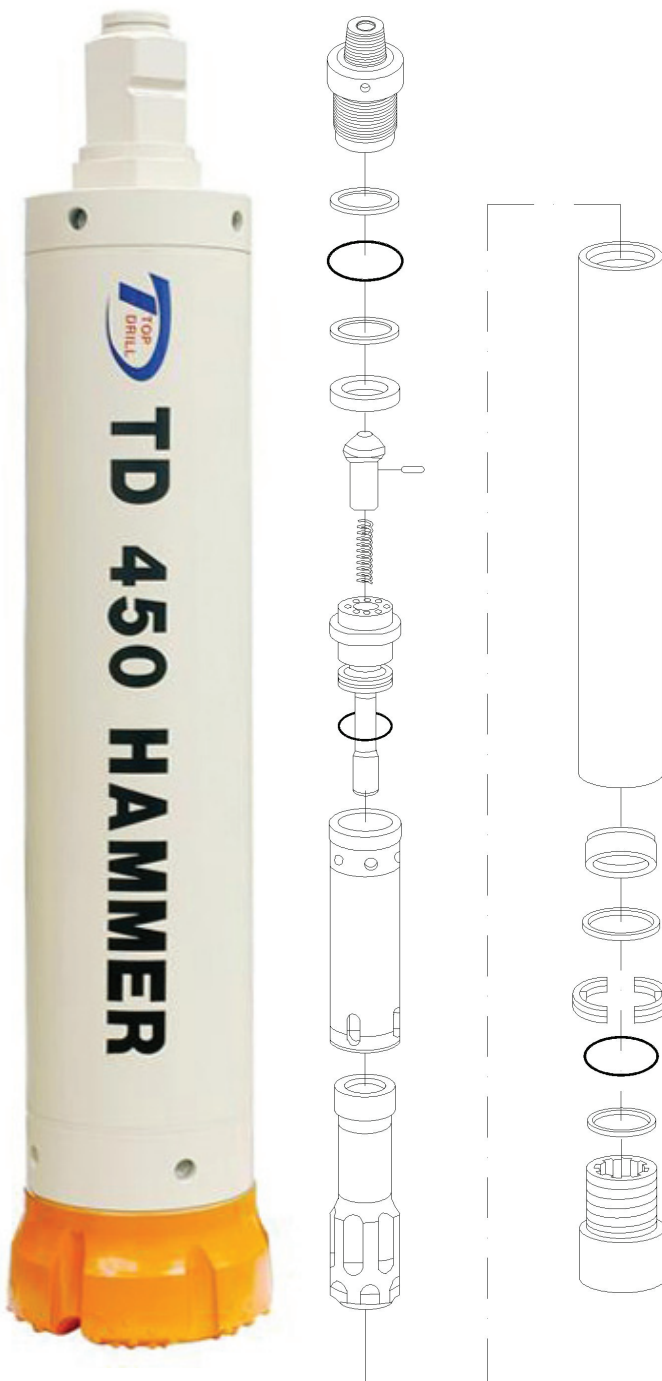
TEL : 82.62.952.4564 / FAX : 82.62.953.1593

EXPORT DIVISION

2607 jidong, Lottecastle, 76, Soongin-Dong, Jongno-Gu, Seoul, Korea

TEL : 82-2-3670 6400 / FAX : 82-2-3670 6399

E-mail : desco@desco-inc.com



MODEL TD450 SHANK TYPE N180

| No | Part Name | Part No |
|----|-------------------------|-------------|
| 1 | Back head | 18T-01(N) |
| 2 | Washer (upper) | 18T-02-1(N) |
| 3 | B.H. O-ring | 18T-01-1(N) |
| 4 | Space ring | 18T-03-1(N) |
| 5 | Make-up ring (urethane) | 18T-04-1(N) |
| 6 | Check valve | 18T-06 |
| 7 | Chock | 18T-06-1 |
| 8 | C.V spring | 18T-06-2 |
| 9 | Air distributor | 18T-08(N) |
| 10 | A.D. O-ring | 18T-08-1 |
| 11 | Inner cylinder | 18T-10(N) |
| 12 | Piston | 18T-11(N) |
| 13 | Case | 18T-12(N) |
| 14 | Bearing (upper) | 18T-14(N) |
| 15 | Piston retainer ring | 18T-11-1(N) |
| 16 | Bit. retainer ring | 18T-19(N) |
| 17 | Bit. ret. O-ring | 18T-19-1(N) |
| 18 | Washer (lower) | 18T-2-2(N) |
| 19 | Chuck | 18T-20(N) |

SPECIFICATION

| | |
|------------------|---|
| DTH Hammer | 18" Hammer |
| Backhead Thread | API 8*5/8 REG. Pin Hex. Joint - H120 |
| Length | 1,807mm |
| Outside Diameter | Dia. 400mm |
| Weight | 1,338kg |
| Shank Type | SD18, N180 |

AIR CONSUMPTION CHART

| | |
|-------------------|---------|
| 150 PSI (10.5bar) | 2120CFM |
| 200 PSI (14bar) | 3000CFM |

Notice

The specification & drawing is based on IR shank.
So, Inner parts & specification can be different as the type of the other shanks.

DTH HAMMER 18"

DESCO INC. is at your solution and service.

desco drill rig

Desco Inc.(HQ/Manufacturer)

HEAD OFFICE: 1240-1, Ok-Dong, Gwangsan, Gwangju, Korea

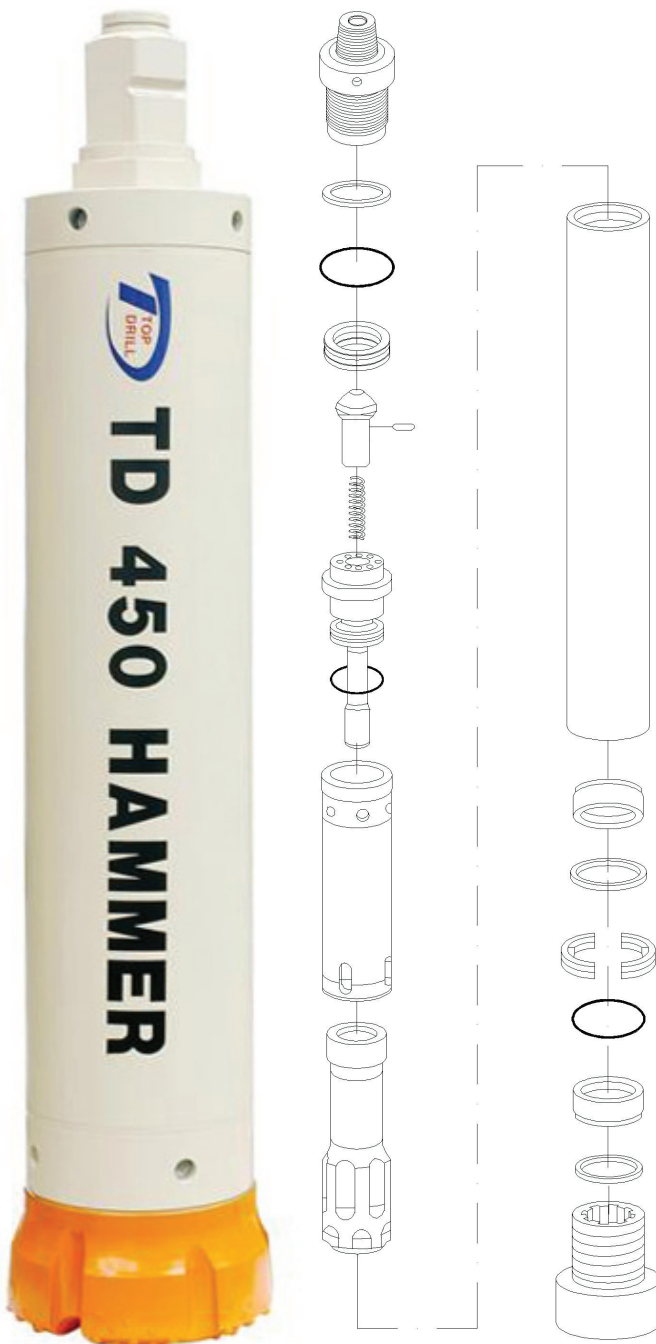
TEL : 82.62.952.4564 / FAX : 82.62.953.1593

EXPORT DIVISION

2607 jidong, Lottecastle, 76, Soongin-Dong, Jongno-Gu, Seoul, Korea

TEL : 82-2-3670 6400 / FAX : 82-2-3670 6399

E-mail : desco@desco-inc.com



MODEL TD450 SHANK TYPE SD18

| No | Part Name | Part No |
|----|----------------------|-------------|
| 1 | Back head | 18T-01(S) |
| 2 | Washer (upper) | 18T-02-1(S) |
| 3 | B.H. O-ring | 18T-01-1(S) |
| 4 | Press ring | 18T-05-1(S) |
| 5 | Check valve | 18T-06 |
| 6 | Chock | 18T-06-1 |
| 7 | C.V spring | 18T-06-2 |
| 8 | Air distributor | 18T-08(S) |
| 9 | A.D. O-ring | 18T-08-1 |
| 10 | Inner cylinder | 18T-10(S) |
| 11 | Piston | 18T-11(S) |
| 12 | Case | 18T-12(S) |
| 13 | Bearing (upper) | 18T-14(S) |
| 14 | Piston retainer ring | 18T-11-1(S) |
| 15 | Bit. retainer ring | 18T-19(S) |
| 16 | Bit. ret. O-ring | 18T-19-1(S) |
| 17 | Bearing (lower) | 18T-15(S) |
| 18 | Washer (lower) | 18T-02-2(S) |
| 19 | Chuck | 18T-20(S) |

SPECIFICATION

| | |
|------------------|---|
| DTH Hammer | 18" Hammer |
| Backhead Thread | API 8*5/8 REG. Pin Hex. Joint - H120 |
| Length | 1,881mm |
| Outside Diameter | Dia. 424mm |
| Weight | 1,492kg |
| Shank Type | SD18, N180 |

AIR CONSUMPTION CHART

| | |
|-------------------|---------|
| 150 PSI (10.5bar) | 2120CFM |
| 200 PSI (14bar) | 3000CFM |

Notice

The specification & drawing is based on IR shank.
So, Inner parts & specification can be different as the type of the other shanks.